



AdminStudio 2015 SP1 Release Notes

20 November 2015

Introduction	3
New Features in AdminStudio 2015 SP1	3
Support for Web Deploy Package Import and Testing	4
Import of Web Deploy Packages into Application Catalog	5
Testing of Web Deploy Packages.....	6
Mobile Test Wizard to Create Custom Tests By Combining Multiple Feature Tests	7
New Microsoft Windows Application Compatibility Infrastructure Tests	11
New Browser Compatibility Tests for Microsoft Edge	12
Test Center Test Selection Dialog Box Performance Enhancement	13
New Features in AdminStudio 2015	13
Enhanced Mobile Application Support	14
Support for Import, Testing, and Distribution of Windows Store Mobile Apps	14
New Mobile Devices Supported	15
New Mobile Risk Assessment Tests.....	16
Operating System Compatibility Tests for Windows 10	17
Windows 10 OS Compatibility Tests for Windows Installer Packages.....	17
Windows 10 OS Compatibility Tests for App-V Packages.....	17
Enhanced Microsoft App-V Support	17
Microsoft App-V Server Distribution Support.....	18
Distributing App-V Packages to App-V Server.....	18
Viewing App-V Deployment Data.....	20
Support for Creating App-V Server Virtual Environments (Connection Groups)	20
Virtual Package Editor Support for Viewing and Editing App-V 5.0 Package Asset Intelligence Fields.....	21
Integration of Microsoft Steps Recorder into Repackager, Tuner, and Automated Application Converter	22
Summary Charts Displayed on Applications Group View	26
Repackager Enhancements	27
Improved Project Build Time.....	27
Add File or Folder to Global Exclusion List from the Repackager Interface	27
Ability to Select a Custom Exclusion List During Repackaging Process.....	29
Capture Only the Changes to the PATH Environment Variable Instead of the Entire Contents.....	29
Creation of Advertised Shortcuts for Non-Executable Targets	29
Improvements in Software Tagging Support	30
Automatic Deletion of Existing Files in Build Output Folder Without Prompting.....	30

Improved Data Extraction from .EXEs.....	30
AdminStudio Enterprise Server Permission Updates.....	31
64-Bit Support for QualityMonitor.....	31
Integration With FlexNet Manager Suite Cloud.....	31
InstallShield 2015.....	32
InstallShield Support for WiseScript Custom Actions.....	32
Enhancements to InstallShield App-V Assistant.....	32
Support for Creating Microsoft App-V 5.0 SP3 Packages.....	32
Ability to Map Files into the Virtual File System Instead of a Primary Application Directory.....	33
Ability to Create App-V 5.x Packages that Have Full Write Permissions to the Virtual File System.....	33
Ability to Configure Advanced COM Isolation Settings for App-V 5.x.....	33
Components/Editions.....	34
System Requirements.....	41
Compatibility Summary.....	41
AdminStudio Client Tool Machine.....	45
Distribution Systems.....	46
Application Catalog Database Server.....	47
AdminStudio Enterprise Server / Workflow Manager Server.....	48
Software Repository.....	48
Automated Application Converter.....	49
Virtual Machine Requirements.....	49
Supported Virtual Machine Platforms.....	49
VMware Requirements.....	49
Microsoft Hyper-V Server Requirements.....	52
Virtual Machine Image Requirements.....	52
Virtual Technology Requirements.....	53
Downloading AdminStudio Installers.....	54
AdminStudio 2015 SP1 Evaluation Restrictions.....	54
Resolved Issues.....	55
AdminStudio 2015 SP1.....	55
AdminStudio 2015.....	57
Known Issues.....	60

Introduction

AdminStudio Suite 2015 SP1 powers an enterprise's daily application readiness process for inventory, rationalization, packaging, and compatibility testing of physical, virtual, and mobile applications, ensuring faster service delivery and predictable deployment.

AdminStudio provides enterprise IT teams the most advanced solution to efficiently prepare reliable application packages for deployment with a complete suite of automated MSI packaging, customization, testing, and reporting capabilities. Its automation, integration with leading software distribution tools, and workflow capabilities help companies streamline day-to-day application packaging operations and reduce the time and cost of application virtualization, Windows migrations and mobile application deployment.

Trusted by more than 10,000 organizations, AdminStudio Suite eliminates the need for multiple standalone tools and provides an integrated solution that is adaptive and scalable to changing business priorities.

New Features in AdminStudio 2015 SP1

This section lists the new features that were included in AdminStudio 2015 SP1:

- [Support for Web Deploy Package Import and Testing](#)
- [Mobile Test Wizard to Create Custom Tests By Combining Multiple Feature Tests](#)
- [New Microsoft Windows Application Compatibility Infrastructure Tests](#)
- [New Browser Compatibility Tests for Microsoft Edge](#)
- [Test Center Test Selection Dialog Box Performance Enhancement](#)

Support for Web Deploy Package Import and Testing



Edition • *This feature is included in Enterprise Edition with Application Compatibility.*

AdminStudio now offers you the ability to test web applications for compatibility with a cloud infrastructure. In AdminStudio 2015 SP1, you can import web deploy packages (.zip) into the Application Catalog so that you can test them for compatibility with the Windows Server 2012 R2 operating system and the Microsoft Azure remote application publishing platform, as well as test them for best practices and browser compatibility.

Using AdminStudio to test your web deploy packages assists you in successfully transitioning those applications to a cloud infrastructure, resulting in reduced costs and accelerated data center modernization.

- [Import of Web Deploy Packages into Application Catalog](#)
- [Testing of Web Deploy Packages](#)

Import of Web Deploy Packages into Application Catalog

A new option has been added to the Package Type Selection panel of the Import Wizard to enable you to import web deploy packages: **Microsoft Web Deploy Package (.zip)**.

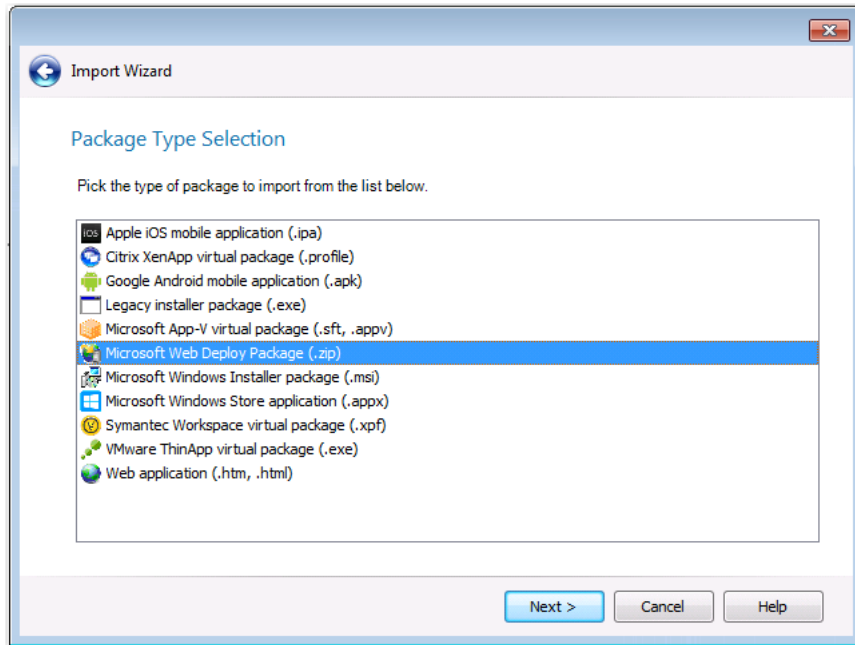


Figure 1: Microsoft Web Deploy Package Option on Package Type Selection Panel of Import Wizard

Application Manager displays information extracted from the imported web deploy package on the Catalog Deployment Type view.

AMS Web Application Catalog Deployment Type View	
Property	Value
Type	Web Deploy Package
IIS Web Application Name	Default Web Site/WorkflowManager
File	C:\Applications\WebDeploy\AMS Web Application.zip
DefaultConnectionString-Web.config Connection String	Data Source=777.111.55.222;Initial Catalog=WFM2015;User ID=jsmith;Password=3g4Z
Date Imported	Monday, November 09, 2015
Add write permission to App_Data Folder	{IIS Web Application Name}/App_Data

Figure 2: Catalog Deployment Type View for Web Deploy Package



Note • The properties displayed on the Catalog Deployment Type view for each web deploy package will vary depending upon the way the package was built.

Testing of Web Deploy Packages

Web deploy packages that have been imported into the Application Catalog can be tested for:

- **Microsoft Azure**—Remote application publishing compatibility with the Microsoft Azure platform.
- **Windows Server 2012 R2**—Operating system compatibility with Windows Server 2012 R2.
- **Browser compatibility**—Browser compatibility with Internet Explorer 9, 10, 11, and Microsoft Edge.
- **Best practices**—Web deploy best practices.

These tests help you to accelerate and simplify efforts to migrate web apps to either the latest release of Windows Server or to Windows Azure for cloud hosting by identifying:

- Which web applications are ready for migration and which ones require development.
- Issues that may slow down data center modernization efforts.

AdminStudio 2015 SP1 includes the following new and existing tests to test web deploy packages.

Category	Test #	Description	Status
Web Deploy Best Practices	WD001	Deprecated Parameter Types	New
	WD002	Constraint of Parameter Scopes	New
Remote Application Publishing Compatibility / Azure Application Services Tests	MAS0001	Port Bindings	New
	MAS0002	Authentication	New
	MAS0003	Global Assembly Cache (GAC)	New
	MAS0004	IIS5 Compatibility Mode	New
	MAS0005	Application Pools	New
	MAS0006	COM and COM+ Components	New
	MAS0007	ISAPI Filters	New
	MAS0008	Migration of Other Components Like SSL, FTP	New
Operating System Compatibility / Windows Server 2012	A subset of the Windows Server 2012 tests apply to web deploy packages: 0501, 0508, 0510, 0515, 0516, 0517, 0519, 0520, 0521, 0522, 0523, 0529, 0530, 0533, 0535, 0537, 0538, 0540, 0541, 0542, and 0552.		Existing
Browser Compatibility / Internet Explorer 9	1101 through 1121		Existing

Category	Test #	Description	Status
Browser Compatibility / Internet Explorer 10	1201 through 1220		Existing
Browser Compatibility / Internet Explorer 11	1301 through 1325		Existing
Browser Compatibility / Microsoft Edge	1401 through 1428		New

Mobile Test Wizard to Create Custom Tests By Combining Multiple Feature Tests



Edition • This feature is included in AdminStudio Professional Edition with Mobile.

AdminStudio's mobile risk assessment tests enable you to find out which features a specific mobile app uses, such as telephone, location services, camera, microphone, etc. In AdminStudio 2015 SP1, this testing has been enhanced with the addition of a new Mobile Test Wizard that enables you to create custom tests by combining risk assessment checks with AND or OR operators.

For example, you can now create a custom test to see if a mobile application uses a gyroscope OR accelerometer. Or you can create a test that determines whether a mobile application uses location services AND allows location tracking.

The Mobile Test Wizard is launched from the **General Options > Mobile Tests** tab of the Application Manager **Options** dialog box. To launch the Mobile Test Wizard, click **New**.

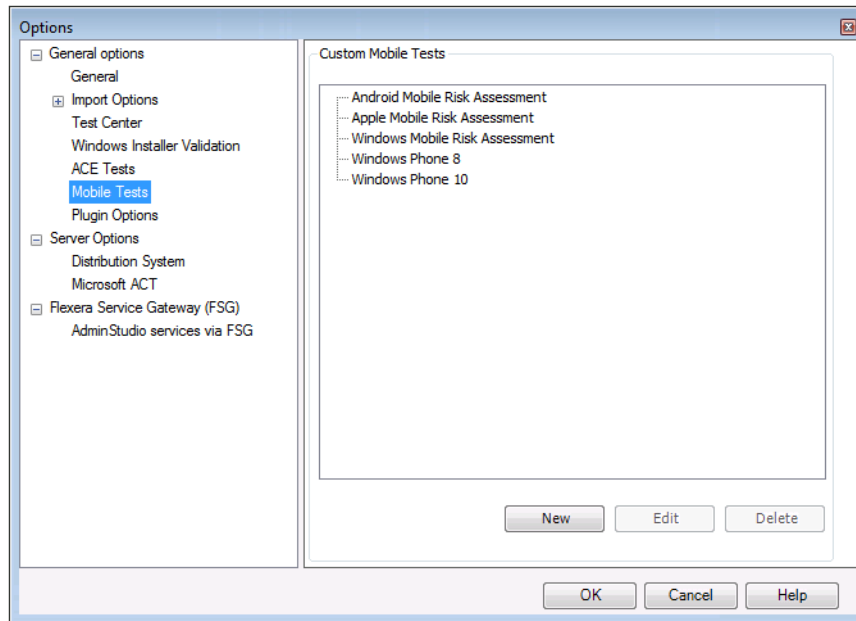


Figure 3: Mobile Tests Tab of Options Dialog Box

On the **Select the Tests** panel of the wizard, you first need to select a **Test Type** from the list (Android, Apple, etc.). The available tests in that category are listed in the box on the left.

Next, move the tests you want to include in the custom test using the arrow keys, and join the tests AND or OR operators by making selections from the **Operator** drop down list.

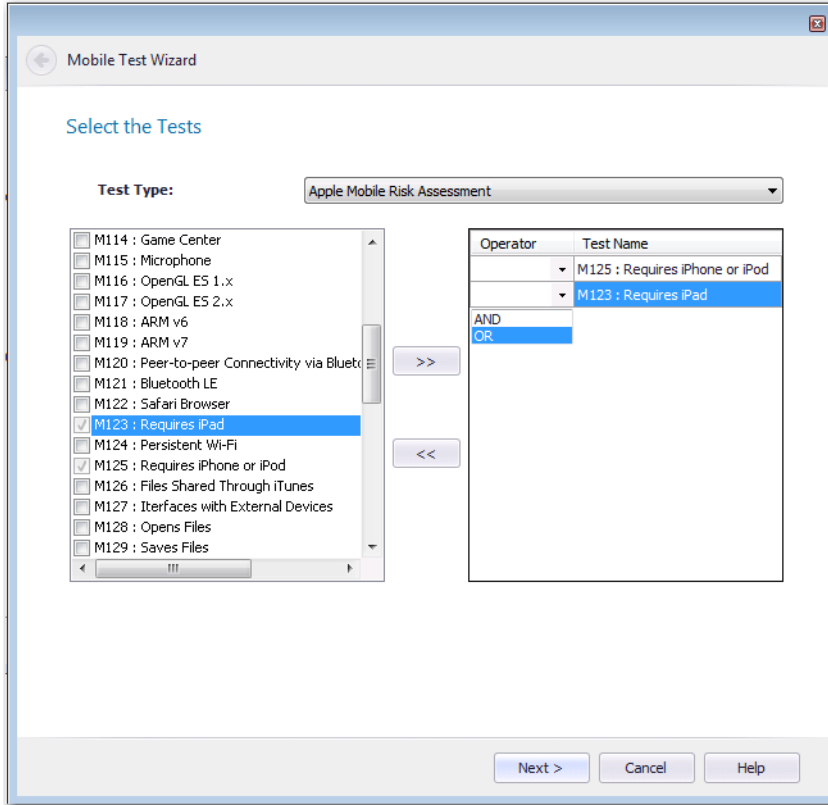


Figure 4: Selecting an Operator to Join Multiple Tests

For example, the following test would test a iOS mobile app to see if it requires iPad and WiFi.

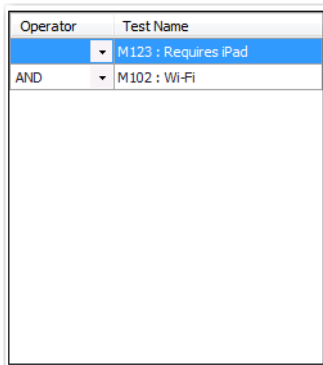


Figure 5: Custom Test

After you have selected the tests and joined them with the AND or OR operator, you click **Next** and **Provide the Test Details** panel opens, where you are prompted to give the test a name, description, and a link to more information.

Figure 6: Provide the Test Details Panel / Mobile Test Wizard

When the Mobile Test Wizard is completed, a number beginning with TG is assigned to this custom test and it now appears on the **Select Tests to Execute** dialog box at the bottom of the list of tests in that category.

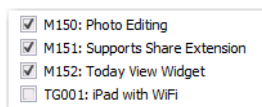


Figure 7: New Test on Select Tests to Execute Dialog Box

When this issue is detected during the testing of a mobile app, the custom error message is listed on the Best Practices and Risk Assessment tab:

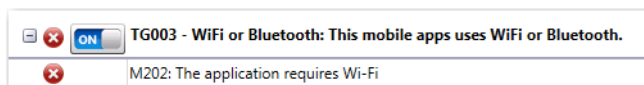


Figure 8: Custom Test Displayed on Best Practices and Risk Assessment Tab of Test Center

New Microsoft Windows Application Compatibility Infrastructure Tests



Edition • This feature is included in AdminStudio Professional Edition with Application Compatibility.

The Microsoft Windows Application Compatibility Infrastructure (Shim Infrastructure) is a technical solution provided by Microsoft to ensure compatibility of existing software with new releases of their operating systems.

As the Windows operating system evolves from version to version—changing to support new technology or incorporate bug fixes—changes may affect existing applications. It is often not possible to modify the application to address these operating system changes. To make sure that these applications will continue to work in the updated operating systems, Microsoft uses the Shim Infrastructure to provide fixes (such as a transform or custom action) for a particular application version that may encounter problems in the updated operating system.

When Microsoft identifies an installer/application/driver with an incompatibility with a specific operating system, Microsoft will either provide a “shim” to enable it to run (such as a transform or custom action) or blocks it from running.

AdminStudio 2015 SP1 includes new tests to scan installers, applications, and drivers for known runtime compatibility issues with various operating systems that have been documented in the Microsoft Windows Application Compatibility Infrastructure. The following table lists the test numbers of these new tests.

Table 1 • Microsoft Windows Application Compatibility Infrastructure Test Numbers

Operating System	Compatibility Issues with Installers	Compatibility Issues with Drivers	Compatibility Issues with Applications
Windows 7 (32-bit)	0058	0059	0060
Windows 7 (64-bit)	0258	0259	0260
Windows 8 (32-bit)	3058	3059	3060
Windows 8 (64-bit)	3158	3159	3160
Windows 10 (32-bit)	3258	3259	3260
Windows 10 (64-bit)	3358	3359	3360
Windows Server 2008 R2	0158	0159	0160
Windows Server 2012	0558	0559	0560

AdminStudio can now identify these compatibility issues during testing and alert you to potential issues. If the installer/application/driver will not run in a particular operating system, an error will be generated. If a 'shim' exists to enable it to run at, perhaps, reduced functionality, a warning will be generated.

If a warning or error is generated by one of these tests, it is recommended that you find out if a newer version of the installer/application/driver is available.

New Browser Compatibility Tests for Microsoft Edge

As part of the Windows 10 release, Microsoft released a new browser: Microsoft Edge. As you prepare to roll out Windows 10 at your enterprise, you need to know whether your web applications are compatible with this new browser.

AdminStudio 2015 SP1 includes new browser compatibility tests to specifically check web deploy packages and websites for compatibility issues with Microsoft Edge.

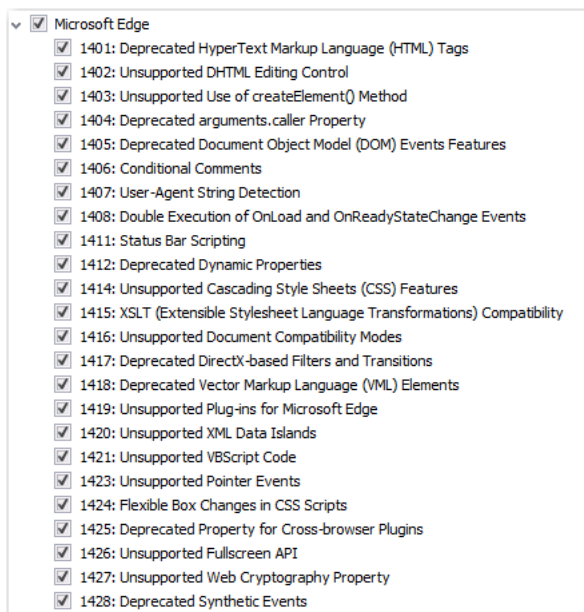


Figure 9: Microsoft Edge Tests on Select Tests to Execute Dialog Box

When testing these web deploy packages and websites, any issues that would potentially cause issues when accessed from Microsoft Edge will be identified, such as web apps that require ActiveX controls.

Test Center Test Selection Dialog Box Performance Enhancement

In AdminStudio 2015 SP1, the Select Tests to Execute dialog box in Test Center now loads much faster, even when connected to a remote database.

New Features in AdminStudio 2015

This section lists the new features that were included in AdminStudio 2015:

- [Enhanced Mobile Application Support](#)
- [Operating System Compatibility Tests for Windows 10](#)
- [Enhanced Microsoft App-V Support](#)
- [Integration of Microsoft Steps Recorder into Repackager, Tuner, and Automated Application Converter](#)
- [Summary Charts Displayed on Applications Group View](#)
- [Repackager Enhancements](#)
- [Improved Data Extraction from .EXEs](#)
- [AdminStudio Enterprise Server Permission Updates](#)
- [64-Bit Support for QualityMonitor](#)
- [Integration With FlexNet Manager Suite Cloud](#)
- [InstallShield 2015](#)

Enhanced Mobile Application Support

AdminStudio 2015 includes full support for Windows Store mobile apps, supports testing for additional mobile devices, and includes additional operating system compatibility and risk assessment tests for mobile apps.

- [Support for Import, Testing, and Distribution of Windows Store Mobile Apps](#)
- [New Mobile Devices Supported](#)
- [New Mobile Risk Assessment Tests](#)

Support for Import, Testing, and Distribution of Windows Store Mobile Apps

AdminStudio 2015 includes full support for Windows Store mobile apps (both local files and public store links), which gives you the ability to you to prepare and manage these apps in conformance with your standard application readiness processes.

Import

In AdminStudio 2015, you can import Microsoft Windows Store mobile apps into the Application Catalog, including both local files and public store links:

- **Local file**—Windows Store mobile app (.appx file).
- **Link to a file in a public store**—Link to a mobile app in the Microsoft Windows Store.

Testing & Reports

After the mobile apps have been imported, you can perform best practices and risk assessment testing (on both local files and public store links), as well as Windows Phone 8 operating system compatibility tests (on local files only).

Test results can be viewed in both Test Center and in Report Center, which includes reports on feature use, feature compatibility by device, feature compatibility by OS, device compatibility, and operating system compatibility.

Distribution

You can use the Distribution Wizard to deploy Windows Store mobile apps (both local files and public store links) to System Center 2012 Configuration Manager, and view deployment status.

New Mobile Devices Supported

AdminStudio 2015 includes support for additional mobile app devices in its device compatibility reports.

- [Apple iOS Devices](#)
- [Google Android Devices](#)
- [Windows Phone Devices](#)

Apple iOS Devices

AdminStudio 2015 includes additional Apple devices in its device compatibility reports. The following devices are now supported:

- iPad WiFi
- iPad 2 3G and iPad 2 WiFi
- iPad Third Gen and iPad Third Gen 4G
- iPad Fourth Gen and iPad Fourth Gen 4G
- iPad Fifth Gen and iPad Fifth Gen 4G
- iPad Sixth Gen and iPad Sixth Gen LTE
- iPad Mini
- iPad Mini 3 and iPad Mini 3LTE
- iPad Mini 4G
- iPad Mini Retina and iPad Mini Retina 4G
- iPhone 4S
- iPhone 5, iPhone 5c, and iPhone 5s
- iPhone 6 and iPhone 6 Plus

Google Android Devices

AdminStudio 2015 includes additional Android devices in its device compatibility reports. The following devices are now supported:

- Samsung Galaxy Grand 2
- Google/LG Nexus 5
- Google/Motorola Mobility Nexus 6
- Google/HTC Nexus 9
- Samsung Galaxy Note 2
- Samsung Galaxy Note 3
- Samsung Galaxy NotePro
- Samsung Galaxy S4
- Samsung Galaxy S5
- Samsung Galaxy Tab 3

Windows Phone Devices

AdminStudio 2015 includes Windows Phone devices in its device compatibility reports. The following devices are supported:

- Microsoft Lumia 535
- Microsoft Lumia 930
- Microsoft SurfacePro 3

New Mobile Risk Assessment Tests

AdminStudio 2015 includes new mobile app risk assessment tests for Apple iOS and Google Android.

Apple iOS

AdminStudio 2015's new Apple iOS tests (M140 through M152) include tests to determine whether the app uses HealthKit, Metal, Local Authentication (Touch ID), Home Kit, CloudKit, Barometer, PassKit (Apple Pay), and several AppExtensions (Custom Keyboard, Document Picker, File Provider, Photo Editing, Share, and Today).

Google Android

AdminStudio 2015's new Google Android risk assessment tests (M247 through M259) include tests to determine whether the app uses device admin, heart rate sensor, relative humidity sensor, Internet access, bookmarks, external storage, account manager, kill background processes, profile, manage documents, IRTransmitter, body sensors, or voice mail.

Operating System Compatibility Tests for Windows 10

AdminStudio 2015 includes new Windows 10 operating system compatibility tests for Windows Installer packages and App-V packages.

Windows 10 OS Compatibility Tests for Windows Installer Packages

AdminStudio 2015 includes over 50 new Windows 10 operating system compatibility tests for Windows Installer packages. You can obtain test results for compatibility with both 32-bit and for 64-bit operating systems.

Windows 10 OS Compatibility Tests for App-V Packages

AdminStudio 2015 includes over 25 new Windows 10 operating system compatibility tests that can be run on App-V packages (both .appv and .sft files).

Enhanced Microsoft App-V Support

AdminStudio 2015 includes several new features that enhance its Microsoft App-V support:

- [Microsoft App-V Server Distribution Support](#)
- [Support for Creating App-V Server Virtual Environments \(Connection Groups\)](#)
- [Virtual Package Editor Support for Viewing and Editing App-V 5.0 Package Asset Intelligence Fields](#)

Microsoft App-V Server Distribution Support

In AdminStudio 2015, you can now distribute App-V 4.x and 5.0 packages to Microsoft App-V Server. You are also now able to view and edit package deployment data on the new **App-V Deployment Data** view.

- Distributing App-V Packages to App-V Server
- Viewing App-V Deployment Data

Distributing App-V Packages to App-V Server

On the **Distribution System** tab of the Application Manager **Options** dialog box, **App-V Server Distribution Plugin** is a new option on the **Deployment Type** list.

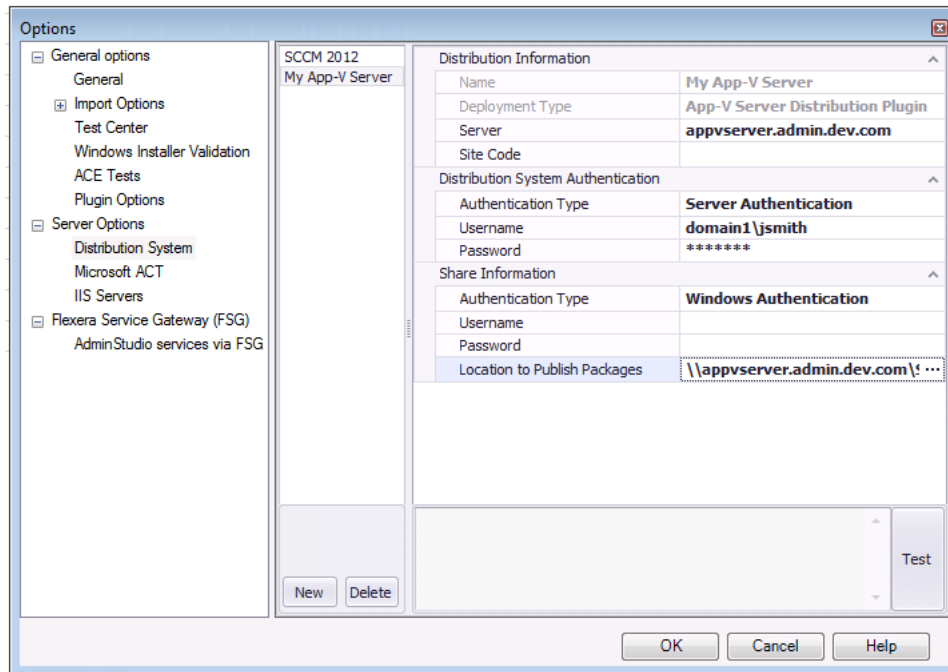


Figure 10: App-V Server on the Distribution System Tab of Options Dialog Box

After a connection is made, your App-V server will be available for selection on the **Target Server Details** panel of the Distribution Wizard.

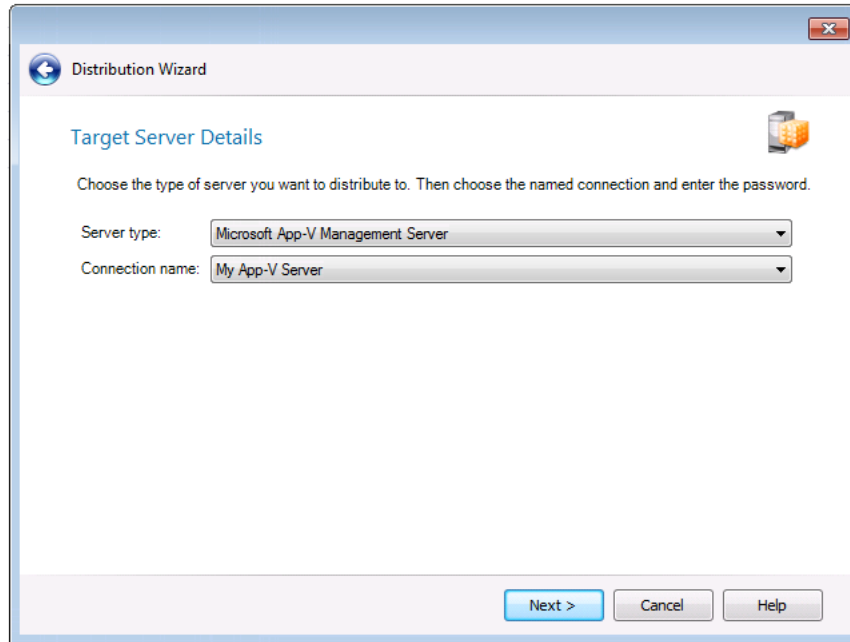


Figure 11: App-V Server Selected on the Target Server Details Panel of Distribution Wizard

After these App-V packages are published to App-V server, they will be available on the Application Virtualization **Packages** view.

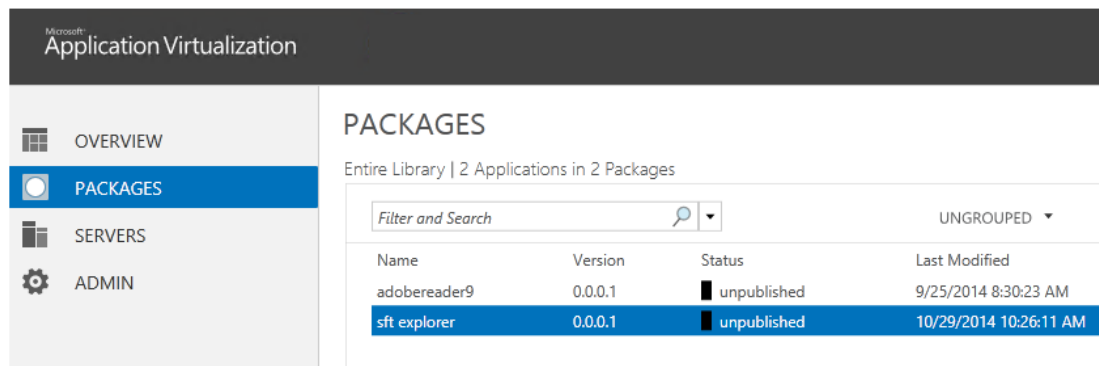


Figure 12: App-V Server

Viewing App-V Deployment Data

For App-V packages that have been published to an App-V server, you can view and edit App-V package deployment data on Application Manager's new **App-V Deployment Data** tab of the **Catalog Deployment Type** view.

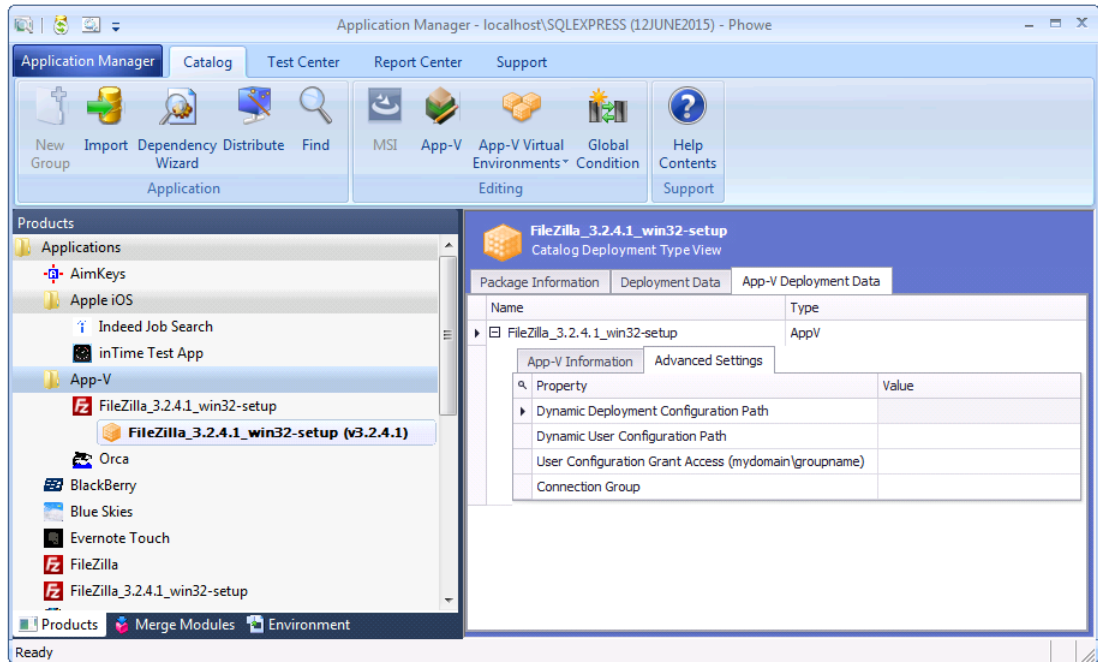


Figure 13: App-V Deployment Data Tab of Catalog Deployment Type View

Support for Creating App-V Server Virtual Environments (Connection Groups)

In AdminStudio 2015, you can create App-V virtual environments for App-V 5.0 packages for both Microsoft App-V Servers and Microsoft System Center 2012 Configuration Manager Servers.

App-V virtual environments enable deployed virtual applications to share the same file system and registry on client computers. This means that unlike standard virtual applications, these applications can share data with each other. You can order these applications so that when multiple applications attempt to modify the same file system or registry value on a client computer, the application with the highest order takes precedence.

App-V Server virtual environments are called connection groups. You can create an App-V Server connection group by selecting **App-V Virtual Environments > App-V Server Environment** from the Application Manager ribbon.

You are prompted to enter a group name, and to select App-V applications in the Application Catalog to add to the group. The order of packages in the connection group is important. This determines the order in which the package contents are merged. So, if there was a conflict (example: same registry value), the content of the first package would be used.

Virtual Package Editor Support for Viewing and Editing App-V 5.0 Package Asset Intelligence Fields

When creating App-V 5.0 packages, AdminStudio populates the Asset Intelligence information tags. In AdminStudio 2015, you can now view and edit these tags in Virtual Package Editor's new **Asset Intelligence** view.

The **Asset Intelligence** view enables you to view and edit information identifying an App-V 5.0 application. These properties are usually obtained from the Add/Remove Programs Uninstall registry key.

Other new features in AdminStudio 2015 regarding asset intelligence include:

- AdminStudio 2015 now creates the Add/Remove Programs entries inside of virtual packages when creating them directly from MSI packages without repackaging. This can help software inventory systems identify these packages.
- Application Manager now populates asset intelligence information during conversion from App-V 4.x to App-V 5.x packages.

The following settings can now be viewed and edited in the Virtual Package Editor **Asset Intelligence View** for an App-V 5.0 package

Table 2 • App-V Package Settings in the Asset Intelligence View

Setting	Description
Software Code	Name of the Add/Remove Programs Uninstall registry key for this package. For Windows Installer packages that were converted to App-V packages, this is the ProductCode .
Product Name	DisplayName value under the Add/Remove Programs Uninstall registry key.
Product Version	DisplayVersion value under the Add/Remove Programs Uninstall registry key.
Publisher	Publisher value under the Add/Remove Programs Uninstall registry key.
Product ID	ProductID value under the Add/Remove Programs Uninstall registry key. Often, this is a serial number or product SKU.
Language	Language value under the Add/Remove Programs Uninstall registry key. This should be a numeric language identifier.
Channel Code	ChannelCode value under the Add/Remove Programs Uninstall registry key.
Install Date	InstallDate value under the Add/Remove Programs Uninstall registry key. It is the last time this product received service.

Table 2 • App-V Package Settings in the Asset Intelligence View (cont.)

Setting	Description
Registered User	RegisteredUser value under the Add/Remove Programs Uninstall registry key.
Installed Location	InstalledLocation value under the Add/Remove Programs Uninstall registry key.
CMm DSLID	Definite Software ID (DSLID) if one exists.
Version Major	VersionMajor value under the Add/Remove Programs Uninstall registry key. It is a numeric representation of a part of the product version.
Version Minor	VersionMinor value under the Add/Remove Programs Uninstall registry key. It is a numeric representation of a part of the product version.
Service Pack	This may correspond to the service pack level of the product.
Upgrade Code	This may be the UpgradeCode of the Windows Installer package used to originally install this application.
OS Component	Numeric value that indicates whether the application is part of the operating system: 0 —Application is not part of the operating system. 1 —Application is part of the operating system.

Integration of Microsoft Steps Recorder into Repackager, Tuner, and Automated Application Converter

In AdminStudio 2015, the Microsoft Steps Recorder documentation tool has been integrated into the Repackaging Wizard, Tuner, and Automated Application Converter.

You can use the Microsoft Steps Recorder tool to automatically record the step-by-step actions that you take during repackaging, virtualization, or response transform creation. This information, which is saved in a web archive (.mht) file, includes a text description of where you clicked on each screen, along with a screen capture for each click.

- [Repackaging Wizard](#)
- [Automated Application Converter](#)
- [Tuner](#)

Repackaging Wizard

When performing repackaging, you can enable the Microsoft Steps Recorder tool by selecting the **Run Microsoft Steps Recorder to document installation steps so they can be reviewed later** option on the **Set Target Project Information and Capture Settings** panel of the Repackaging Wizard.

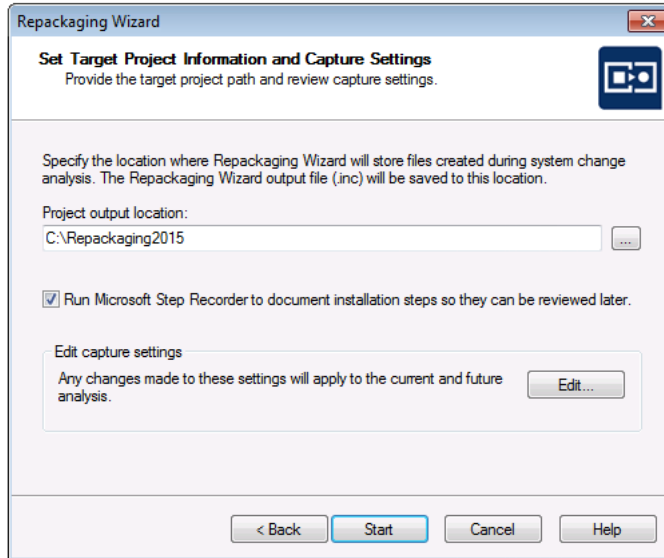


Figure 14: Microsoft Steps Recorder Option in the Repackaging Wizard

If this option is selected, when you click **Start** to begin repackaging, the **Steps Recorder** dialog box opens and recording automatically begins.

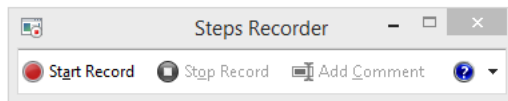


Figure 15: Microsoft Steps Recorder / Microsoft Steps Recorder Dialog Box

This dialog box gives you the ability to pause or stop the recording, or add a comment to the recorded documentation.

When you have completed the repackaging process, the Repackaged Output folder will contain an .mht file, which is a web archive file. To open this file in a web browser, double-click on it. It contains screen captures from the repackaging session each time the mouse was clicked.

Recorded Steps

This file contains all the steps and information that was recorded to help you describe the recorded steps to others.

Before sharing this file, you should verify the following:

- The steps below accurately describe the recording.
- There is no information below or on any screenshots that you do not want others to see.

Passwords or any other text you typed were not recorded, except for function and shortcut keys that you used.

You can do the following:

- [Review the recorded steps](#)
- [Review the recorded steps as a slide show](#)
- [Review the additional details](#)

Steps

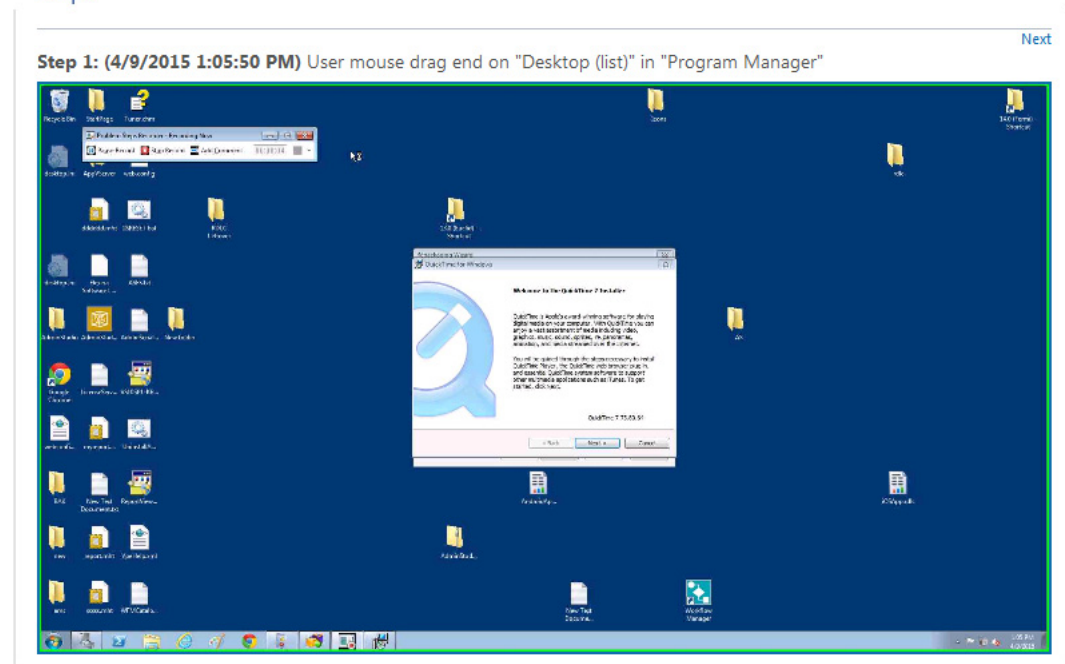
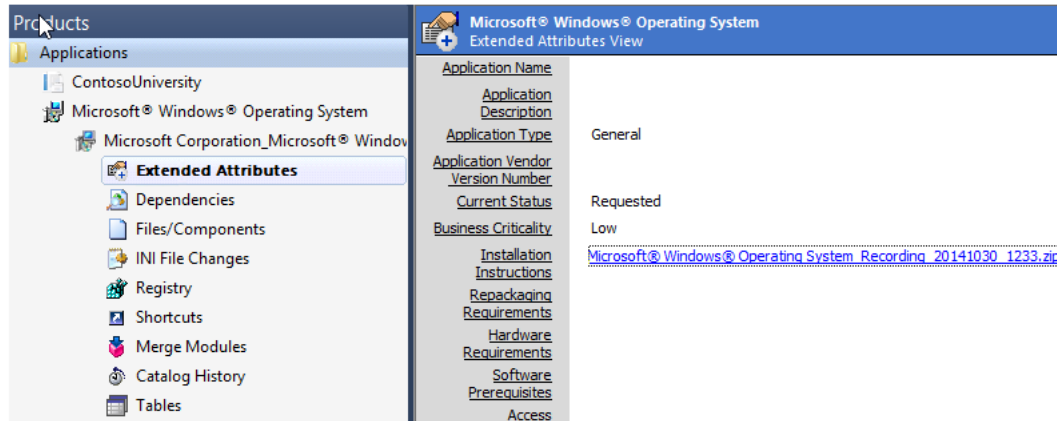


Figure 16: Web Archive File

When you build a Windows Installer package using this Repackager project, the recorded web archive file will be copied to the Windows Installer package output folder. Then, when you import this Windows Installer package into the Application Catalog, the recorded web archive file (or files) will also be imported, and a link to it will be available on the **Extended Attributes** view, in the **Installation Instructions** field.



Automated Application Converter

You can use the Microsoft Steps Recorder tool with Automated Application Converter to automatically record the step-by-step actions that you take on the virtual machine during repackaging in a web archive (.mht) file.

In Automated Application Converter, you can enable the Microsoft Steps Recorder to document steps during repackaging either globally or per project:

- **Globally**—Set the **Documentation Tool** option to **Enabled** on the **Project Options** dialog box.
- **Individual package**—Select a package in the **Packages** tab and set the **Documentation Tool** property in the **Properties** window to **Enabled**.

Tuner

You can use the Microsoft Steps Recorder tool with Tuner to automatically record the step-by-step actions that occur during response transform creation.

To enable this option, select the **Run Microsoft Steps Recorder to document response transform creation steps to that they can be reviewed later** option on the **Create a New Transform** view of Tuner.

Summary Charts Displayed on Applications Group View

In previous releases, when the root Application node or a group node was selected in the Application Manager tree, a list of applications in that group were listed. In AdminStudio 2015, the Group view consists of pie charts that summarize information about packages in the group.

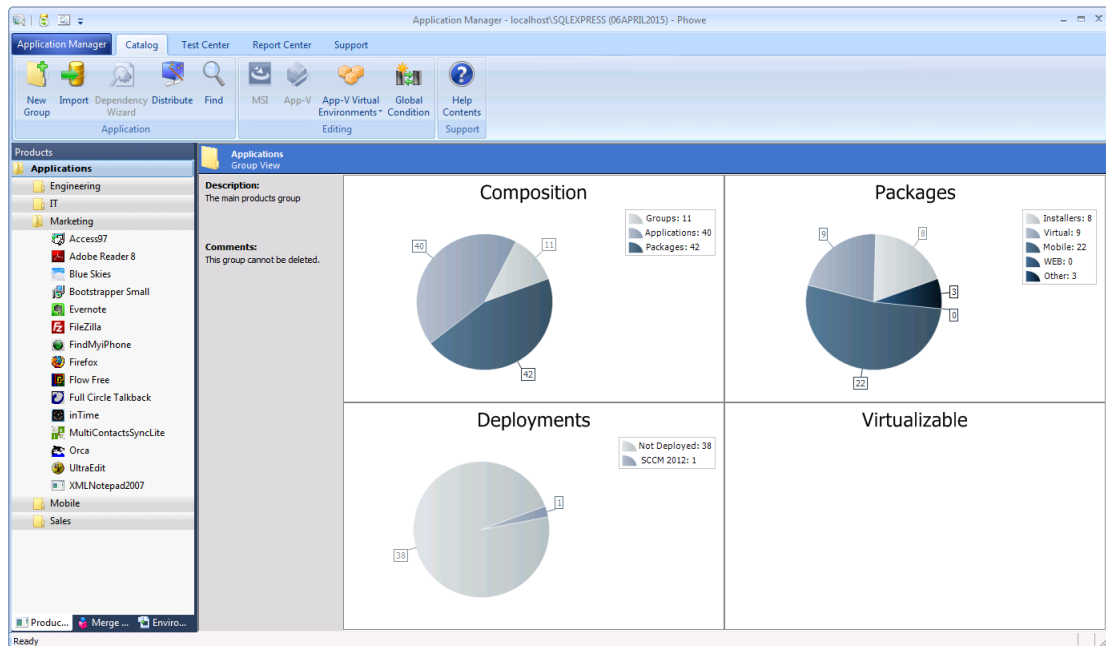


Figure 17: Application Group View

The Group View provides the following summary information about the selected group:

- **Composition**—Displays the number of subgroups, applications, and packages in the selected group.
- **Packages**—Displays the number of packages in each of the following categories: installers (Windows Installer packages and legacy installers), virtual packages, mobile apps, web applications, and other.
- **Deployments**—Displays the number of packages that are deployed.
- **Virtualizable**—Displays the number of virtual packages.

Repackager Enhancements

In AdminStudio 2015, there have been several enhancements to Repackager:

- Improved Project Build Time
- Add File or Folder to Global Exclusion List from the Repackager Interface
- Ability to Select a Custom Exclusion List During Repackaging Process
- Capture Only the Changes to the PATH Environment Variable Instead of the Entire Contents
- Creation of Advertised Shortcuts for Non-Executable Targets
- Improvements in Software Tagging Support
- Automatic Deletion of Existing Files in Build Output Folder Without Prompting

Improved Project Build Time

Repackager build time performance has been improved for packages containing multiple shortcuts.

Add File or Folder to Global Exclusion List from the Repackager Interface

When editing a project in the Repackager interface, you can now choose to not only exclude a file or directory from that project, you can also add an excluded file or directory to the global exclusions list. There are now two additional options on the context menu in the Files and Folders view: **Add to Exclusions** and **Remove from Exclusions**.

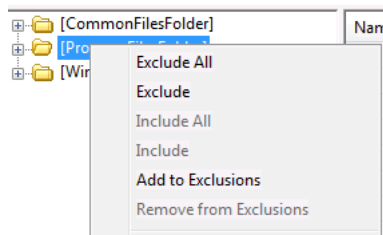


Figure 18: Exclusion Context Menu on Files and Folders View

The following table explains how to modify the global exclusions list from the Repackager interface.

Table 3 • Modifying the Global Exclusions List from the Files and Folders View

To ...	Select ...	Click on context menu ...
Add a captured file to the global exclusions list	File you want to add to the global exclusions list	Add to Exclusions
Add captured files within a directory to the global exclusions list	Directory containing the files you want to add to the global exclusion list	Add to Exclusions You will be prompted to indicate whether you want to also exclude files in subdirectories of the selected directory.
Remove a captured file that had previously been added to the global exclusions list	File you want to remove	Remove from Exclusions
Remove captured files within a directory that had previously been added to the global exclusions list	Directory containing the files you want to remove from the global exclusion list	Remove from Exclusions

Ability to Select a Custom Exclusion List During Repackaging Process

In AdminStudio 2015, you can select a custom exclusion list during the repackaging process. To do this, click **Edit** in the **Edit captures setting** area of the **Set Target Project Information and Capture Settings** panel of the Repackaging Wizard to open the **Analysis Options** dialog box.

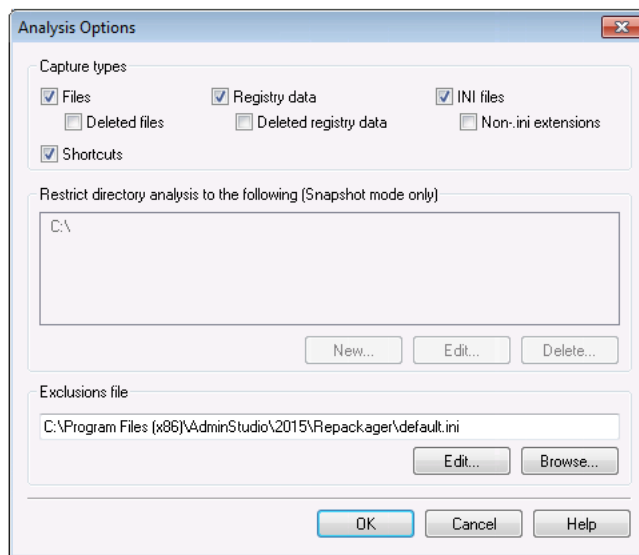


Figure 19: Exclusions File Field on the Analysis Options Dialog Box

On the **Analysis Options** dialog box, a new **Exclusions file** field is available where you can select a different exclusions file.

Capture Only the Changes to the PATH Environment Variable Instead of the Entire Contents

In AdminStudio 2015, there is better handling for the PATH environment variable. Repackager now captures the change in the PATH environment variable instead of capturing the entire contents of it post repackaging. In this way, Repackager is only capturing what is added by the setup being repackaged.

Creation of Advertised Shortcuts for Non-Executable Targets

In AdminStudio 2015, Repackager now creates advertised shortcuts for non-executable targets. This better facilitates Windows Installer advertisement, and facilitates auto-repair/resiliency.

Improvements in Software Tagging Support

In AdminStudio 2015, there have been improvements in software tagging support. Repackager now uses an updated schema (the same one used by InstallShield). This makes it possible to manually sign a tag file if desired. Also, the Repackager and Application Manager Software ID Tag views have been updated to be more consistent with InstallShield in terms of naming and ordering tag attributes.

Automatic Deletion of Existing Files in Build Output Folder Without Prompting

In AdminStudio 2015, a safety check was added to Repackager regarding the automatic deletion of files in the build output folder. If the build output folder has the default name of `MSI_Package`, Repackager will automatically delete the files without prompting. If the build output folder has a name other than `MSI_Package`, the user is prompted to confirm deletion of output folder contents.

Improved Data Extraction from .EXEs

AdminStudio 2015 can now extract more information from .EXE files when they are imported into the Application Catalog. AdminStudio now extracts the company name, product name, and version from .EXE files created by popular wrapping technologies including:

- InstallShield InstallScript executables
- InstallShield MSI-wrapped executables
- InstallShield Suite-wrapped executables
- WiseScript executables

AdminStudio Enterprise Server Permission Updates

There have been several updates to the AdminStudio Enterprise Server permissions.

Application Catalog Upgrade Permission

In AdminStudio 2015, you can now control whether a user can upgrade an Application Catalog. If the user is not assigned to a Role that has the **Administration > Roles > Add** permission, that user will not be permitted to upgrade an Application Catalog. This new feature enables you to prevent users from upgrading their Application Catalogs unless that have this specific permission. In previous releases, any user could upgrade an Application Catalog.

Select Tests to Execute Permission

A new permission has been added under Application Manager/ConflictSolver named Test Selection Wizard. Only users with that permission will be able to modify the tests selected on the **Select Tests to Execute** dialog box.

64-Bit Support for QualityMonitor

Quality Monitor now runs on 64-bit operating systems and can test 64-bit applications.

Integration With FlexNet Manager Suite Cloud

AdminStudio can now integrate with FlexNet Manager Suite Cloud.

To integrate, open the **Flexera Service Gateway (FSG)** tab of the Application Manager **Options** dialog box, and enter the **Gateway Host Name** of FlexNet Manager Suite Cloud and the **Connection Token**.

InstallShield 2015

AdminStudio Standard and Professional Editions include InstallShield 2015 Professional, while AdminStudio Enterprise Edition includes InstallShield Premier. For a full list of the new features in InstallShield 2015, see the [InstallShield 2015 Release Notes](#).

In addition to all of the new features included in InstallShield 2015, it also includes several additional features that are specific to the AdminStudio Edition.

- [InstallShield Support for WiseScript Custom Actions](#)
- [Enhancements to InstallShield App-V Assistant](#)

InstallShield Support for WiseScript Custom Actions

The AdminStudio Edition of InstallShield now has support for a new type of custom action: a WiseScript custom action. A WiseScript custom action runs a WiseScript executable file. It includes a wrapper MSI DLL that gets and sets Windows Installer properties and evaluates Windows Installer conditions.

Enhancements to InstallShield App-V Assistant

In InstallShield 2015, there have been several enhancements to the App-V Assistant:

- [Support for Creating Microsoft App-V 5.0 SP3 Packages](#)
- [Ability to Map Files into the Virtual File System Instead of a Primary Application Directory](#)
- [Ability to Create App-V 5.x Packages that Have Full Write Permissions to the Virtual File System](#)
- [Ability to Configure Advanced COM Isolation Settings for App-V 5.x](#)

Support for Creating Microsoft App-V 5.0 SP3 Packages

The Microsoft App-V Assistant in InstallShield includes support for creating virtual applications that can run on Microsoft App-V 5.0 SP3 clients.

Ability to Map Files into the Virtual File System Instead of a Primary Application Directory

The Microsoft App-V Assistant now enables you to configure your App-V package to map files into the virtual file system (VFS). This support is available for App-V 4.x and 5.x packages.

To specify whether you want to map the files to the VFS or use a primary application directory, use the Files page in the Microsoft App-V Assistant. The More Options area on this page has a new File Mapping link. When you click this new link, a new File Mapping dialog box opens, enabling you to select the appropriate option.

The File Mapping link and dialog box replace the Primary Application Directory link and dialog box, which previously enabled you to specify primary application directory.

Ability to Create App-V 5.x Packages that Have Full Write Permissions to the Virtual File System

The Microsoft App-V Assistant now enables you to specify whether you want an App-V 5.x package that you are creating to have full write permissions to the virtual file system (VFS). To specify whether you want to use this support, use the new Allow full write permission to the VFS check box. This check box is on the File Mapping dialog box, which is available from the Files page in the Microsoft App-V Assistant when you click the File Mapping link in the More Options area.

Ability to Configure Advanced COM Isolation Settings for App-V 5.x

The Microsoft App-V Assistant now enables you to configure advanced settings for COM isolation. This support is available for App-V 5.x packages.

To configure the new settings, use the Package Information page in the Microsoft App-V Assistant. The More Options area on this page has a new Isolation Settings link. When you click this new link, a new Isolation Settings dialog box opens. This dialog box enables you to specify whether you want to isolate the COM objects from the local system, or allow them to interact with the local system. This dialog box also lets you indicate whether you want to isolate named objects from the local system, or allow them to interact with the local system.

The `ISVirtualPackage` table in the Direct Editor view supports advanced custom parameters:

- **AppVv5ComInprocess**—This option corresponds with the `InProcessEnabled` attribute of the `appv:IntegratedCOMAttributes` element.
- **AppVv5ComOutofprocess**—This option corresponds with the `OutOfProcessEnabled` attribute of the `appv:IntegratedCOMAttributes` element

A value of 1 indicates true; a value of the number 0 (or an empty value) indicates false. By default, these settings are not configured in the `ISVirtualPackage` table, so the resulting App-V package does not have these settings enabled.

Components/Editions

AdminStudio 2015 SP1 is available in Standard, Professional, and Enterprise Editions. You can also purchase additional Application Virtualization, Application Compatibility, and/or Mobile packs.

Edition	Add On	Tools	Functionality
Standard	None	Repackager Legacy Distribution Wizard InstallShield 2015 (Professional Edition) Tuner Application Isolation Wizard	Repackage applications into Windows Installer format Perform basic ISO tagging, including creation of tag files Prepare packages for distribution Customize Windows Installer packages by either directly editing them or by creating transforms Customize Windows Installer packages by creating transforms Resolve component versioning conflicts
	Application Virtualization	Automated Application Converter (Single Application Version) Conversion Wizard (Single Application Version) Virtual Package Editor Microsoft App-V Assistant ThinApp Assistant Citrix Assistant	Convert a package to a virtual application in the following formats: <ul style="list-style-type: none"> • Microsoft App-V (4.x and 5.0 SP2) • Citrix XenApp • VMware ThinApp (4.x and 5.x) • Symantec Workspace Convert one package at a time Edit App-V packages Create a customized virtual package from an InstallShield project

Edition	Add On	Tools	Functionality
Professional	None	<i>Same as Standard, plus:</i>	
		Application Manager / Catalog	<p>Manage applications in an Application Catalog database</p> <p>Manage a package's System Center 2012 Configuration Manager and Symantec Altiris Client Management Suite deployment data</p> <p>View an application's System Center 2012 Configuration Manager deployment status</p> <p>Perform advanced ISO tag file creation, editing, and storage</p>
		Application Manager / Test Center	<p>Perform tests in the following categories:</p> <ul style="list-style-type: none"> • Windows Installer Internal Consistency Evaluators • Windows Installer Best Practices • Application Conflicts <p>Test and fix one package at a time</p>
		Distribution Wizard	<p>Publish applications to System Center 2012 Configuration Manager and Symantec Altiris Management Server.</p>
		OS Snapshot Wizard	<p>Capture basic operating system configuration in an OS Snapshot, which can be imported into the Application Catalog to check for potential OS conflicts</p>
		QualityMonitor	<p>Perform Windows Installer testing, including testing in a locked down environment</p>

Edition	Add On	Tools	Functionality
Professional (Continued)	Application Virtualization	<i>Same as Standard, plus:</i>	
		Enhancements to Application Manager / Catalog	Import virtual packages into Application Catalog View virtual package data in Application Manager Manage System Center 2012 Configuration Manager deployment data for App-V 4.x and 5.0 SP2 packages Manage Citrix XenApp Server deployment data for Citrix XenApp profiles and App-V 4.x packages Manage Symantec Altiris Client Management Suite deployment data for Symantec Workspace and VMware ThinApp packages Manage App-V Server deployment data for App-V 4.x and 5.0 packages
		Enhancements to Application Manager / Test Center	Test packages for compatibility to be virtualized to App-V, ThinApp, XenApp, and Symantec Workspace formats Test App-V packages for best practices Test App-V packages for conflicts with other packages
Enhancements to Distribution Wizard	Publish applications containing App-V 4.x and 5.0 packages to Microsoft App-V Server Publish applications containing App-V packages to System Center Configuration Manager and Citrix XenApp Server Publish applications containing Citrix XenApp profiles and App-V 4.x packages to Citrix XenApp Server Publish applications containing Symantec Workspace and VMware ThinApp packages to Symantec Altiris Client Management Suite Server		

Edition	Add On	Tools	Functionality
Professional (Continued)	Application Compatibility	Enhancements to Application Manager / Test Center	<p>Test packages for compatibility with the following operating systems:</p> <ul style="list-style-type: none"> ● Windows 7 (32-bit and 64-bit) ● Windows 8 (32-bit and 64-bit) ● Windows 10 (32-bit and 64-bit) ● Windows Server 2008 R2 ● Windows Server 2012 <p>On the Operating System Compatibility tab of the Test Center Deployment Type View, you can see detailed data for only the last package tested; for all other packages in the Application Catalog, this tab is blank (even if the package has been previously tested)</p> <p>Ability to display Microsoft Application Compatibility Toolkit (ACT) database test results on ACT Summary tab of the Test Center Deployment Type View</p>
	Mobile	Enhancements to Application Manager / Catalog	<ul style="list-style-type: none"> ● Import of the following mobile app formats into the Application Catalog: <ul style="list-style-type: none"> ● Apple iOS mobile apps (local and public store link) ● Google Android mobile apps (local and public store link) ● Microsoft Windows Store mobile apps (local and public store link) ● Ability to import iOS Enterprise Policy Configuration files, view their settings, and determine the policy compatibility of iOS mobile apps. ● Ability to view iOS and Android mobile app reporting on feature use, device compatibility, and OS compatibility. ● Ability to view deployment data for Windows Store mobile apps, including detection methods and framework customizations ● Ability to manage AirWatch Server deployment data for both Apple iOS and Google Android mobile apps (local and public store link)

Edition	Add On	Tools	Functionality
Professional (Continued)	Mobile (Continued)	Enhancements to Application Manager / Test Center	<ul style="list-style-type: none"> • Test Apple iOS mobile apps for best practices • Test Apple iOS, Microsoft Windows, and Google Android mobile apps for risk assessment • Test Apple iOS, Microsoft Windows, and Google Android mobile apps for operating system compatibility <hr/> Enhancements to Distribution Wizard
Enterprise	None	<i>Same as Professional, plus:</i>	<hr/> InstallShield 2015 (Premier Edition instead of Professional Edition) <p>Advanced customization of Windows Installer packages by either directly editing them or by creating transforms</p> <hr/> AdminStudio Virtual Desktop Assessment (Limited Edition) <p>Monitor the behavior of computers, users, and applications in your enterprise and gather data on the desktop environment</p> <p>In Test Center, perform testing to determine whether a Windows Installer package is a suitable candidate for conversion to a virtual desktop</p> <hr/> Application Manager / Report Center <p>Advanced reports including detailed summary and dashboard reports on Test Center test results, package data, and deployment information</p> <hr/> Platform API <p>Use to integrate your existing .NET applications or scripting environments like Microsoft PowerShell with AdminStudio</p> <hr/> Software Repository <p>Secure storage system for AdminStudio package data, including version management</p>

Edition	Add On	Tools	Functionality
Enterprise (Continued)	None	OS Security Patch Wizard	Import Windows OS patches into the Application Catalog in order to test the impact they will have on your environment before they are deployed
		Report Center (Web Tool)	Generate reports on packages stored in the Application Catalog, including reports using custom SQL queries
		Security Console (Web Tool)	Manage AdminStudio user accounts and directory services Manage AdminStudio roles and permissions
Application Virtualization		<i>Same as Professional, plus:</i>	
		Automated Application Converter (Multiple Application Version) Conversion Wizard (Multiple Application Version)	Ability to perform automated conversion of multiple packages at a time
		Enhancements to Application Manager / Report Center	Includes the Application Virtualization Compatibility Dashboard report Report Center's Application Readiness Dashboard includes an Application Virtualization Compatibility summary chart and App-V Best Practices and App-V Conflicts test results summary charts.
Application Compatibility		<i>Same as Professional, plus:</i>	
		Enhancements to Application Manager / Test Center	Ability to test and fix multiple packages or groups of packages simultaneously Ability to view package-level test details for Operating System Compatibility and Browser Compatibility tests for all packages in the Application Catalog, not just the last one tested Import of web applications and web deploy packages into the Application Catalog Test web applications for compatibility with the following browsers: <ul style="list-style-type: none"> ● Internet Explorer 9 ● Internet Explorer 10 ● Internet Explorer 11 ● Microsoft Edge

Edition	Add On	Tools	Functionality
Enterprise (Continued)	Application Compatibility (Continued)	Enhancements to Application Manager / Test Center (Continued)	Test web deploy packages for compatibility with the following platforms: <ul style="list-style-type: none"> • Windows Server 2012 R2 • Microsoft Azure Application Services Test web deploy packages for best practices. Test web deploy packages for browser compatibility.
		Enhancements to Application Manager / Report Center	Display of Microsoft ACT database test results on the Report Center tab
		Enhancements to Platform API	Ability to use the Test-ASPackage and Resolve-ASPackage Platform API commands to perform batch package testing and issue resolution.
	Mobile	<i>Same as Professional</i>	

System Requirements

This section lists the requirements for AdminStudio client tool machine, Application Catalog database server, Web server, Software Repository server, and virtual machines.

- [Compatibility Summary](#)
- [AdminStudio Client Tool Machine](#)
- [Distribution Systems](#)
- [Application Catalog Database Server](#)
- [AdminStudio Enterprise Server / Workflow Manager Server](#)
- [Software Repository](#)
- [Automated Application Converter](#)

Compatibility Summary

AdminStudio 2015 SP1 supports the following versions of the listed software.

Category	Item	Supported Versions
AdminStudio Client Tools OS Standalone Repackager OS Standalone Tuner OS	Microsoft Windows	<ul style="list-style-type: none"> • Windows 7 • Windows 8 and 8.1 • Windows 10 • Windows Server 2008 R2 • Windows Server 2012 • Windows Server 2012 R2
AdminStudio Web Server OS (AdminStudio Enterprise Server, AdminStudio Inventory and Rationalization, Workflow Manager)	Microsoft Windows Server	<ul style="list-style-type: none"> • Windows Server 2008 R2 • Windows Server 2012 • Windows Server 2012 R2
Application Catalog Database	Microsoft SQL Server	<ul style="list-style-type: none"> • 2008 R2 • 2012 • 2014



Category	Item	Supported Versions
Flexera Software Product Integration	FlexNet Manager Platform / FlexNet Manager Suite (On Premises)	9.2 SP1 or later
	FlexNet Manager Suite (Cloud)	2014 or later
	App Portal	7.5.3 or later
	Workflow Manager	2015
	Flexera Service Gateway	1.0
Virtual Machines for Virtualization	VMware Workstation	6.5 or later
	VMware ESXi	VMware ESX/ESXi Server, Version 3.5 Update 3 or later
	VMware vSphere	5.5
	Microsoft Hyper-V Server	2008 R2 or later
Virtual Formats	App-V	App-V 4.5 through 5.0 SP3
	VMware ThinApp	4.x and 5x
	Symantec Workspace Virtualization	7.6
Microsoft App-V Sequencer	App-V Sequencer	5.0
Desktop Distribution (Applications)	System Center Configuration Manager	2007, 2012 R2, 2012 R2 SP1
	Microsoft App-V Server	5.0
	Symantec Altiris Client Management Suite	7.5
	Citrix XenApp Server	6.5

Category	Item	Supported Versions
Desktop Distribution (Packages)	Novell ZENworks Configuration Management	10 and 11
	LANDESK Management Suite	9
	System Center Configuration Manager	2007, 2012 R2, 2012 R2 SP1
	Altiris Notification Server	6.5
	Marimba NCP	4.7.2
Mobile Distribution	AirWatch Server	6.5
	Microsoft App-V Server	5.0
	Microsoft System Center Configuration Manager	2012 R2, 2012 R2 SP1
Mobile Operating Systems Supported for compatibility testing	Apple iOS	<ul style="list-style-type: none"> • 6 (32-bit) • 7 (32-bit and 64-bit) • 8 (32-bit and 64-bit)
	Google Android	<ul style="list-style-type: none"> • 4.1 Jelly Bean • 4.2 Jelly Bean • 4.3 Jelly Bean • 4.4 KitKat • 5.0 Lollipop
	Windows Phone	<ul style="list-style-type: none"> • 8 • 10
Internet Browsers Supported for browser compatibility testing	Microsoft Internet Explorer	9, 10, 11
	Microsoft Edge	
Internet Browsers For viewing AdminStudio Enterprise Server, AdminStudio Inventory and Rationalization, and Workflow Manager	Mozilla Firefox	Firefox for Windows 25.0 or later
	Google Chrome	Chrome for Windows 33.0 or later
	Microsoft Internet Explorer	Microsoft Internet Explorer 9.0 or later
	Microsoft Edge	
	Apple Safari	Safari for Mac OS X and iOS

Category	Item	Supported Versions
Mobile Devices	Apple iOS Devices	<ul style="list-style-type: none"> • iPad WiFi • iPad 2 3G and iPad 2 WiFi • iPad Third Gen and iPad Third Gen 4G • iPad Fourth Gen and iPad Fourth Gen 4G • iPad Fifth Gen and iPad Fifth Gen 4G • iPad Sixth Gen and iPad Sixth Gen LTE • iPad Mini • iPad Mini 3 and iPad Mini 3LTE • iPad Mini 4G • iPad Mini Retina and iPad Mini Retina 4G • iPhone 4S • iPhone 5, iPhone 5c, and iPhone 5s • iPhone 6 and iPhone 6 Plus
	Google Android Devices	<ul style="list-style-type: none"> • Samsung Galaxy Grand 2 • Google/LG Nexus 5 • Google/Motorola Mobility Nexus 6 • Google/HTC Nexus 9 • Samsung Galaxy Note 2 • Samsung Galaxy Note 3 • Samsung Galaxy NotePro • Samsung Galaxy S4 • Samsung Galaxy S5 • Samsung Galaxy Tab 3
	Windows Phone Devices	<ul style="list-style-type: none"> • Microsoft Lumia535 • Microsoft Lumia 930 • Microsoft SurfacePro 3
API	PowerShell	4.x
Application Compatibility	Microsoft Application Compatibility Toolkit (ACT)	5.6

AdminStudio Client Tool Machine

The following table lists the recommended system configuration for a machine running the AdminStudio client tools.


Item	Description
Processor	32-bit or 64-bit processor at 2 GHz or greater
	 <p>Note • All of the AdminStudio client tools run on 64-bit Windows operating systems. To repackage 64-bit applications or create 64-bit App-V packages, install AdminStudio on a 64-bit Windows operating system.</p>
RAM	4 GB
Hard Disk	4 GB of free space
Display	Designed for XGA at 1024 x 768 resolution or higher
Operating Systems	<ul style="list-style-type: none"> • Windows 7 • Windows 8 and Windows 8.1 • Windows 10 • Windows Server 2008 R2 • Windows Server 2012 and Windows Server 2012 R2
	 <p>Note • Support for Windows Vista was removed due to a modification made by Microsoft. For more information, see the following articles:</p> <ul style="list-style-type: none"> • An ADO application does not run on down-level operating systems after you recompile it on a computer that is running Windows 7 SP 1 or Windows Server 2008 R2 SP 1 or that has KB983246 installed [Microsoft Article 2517589] • A Better Solution for the Windows 7 SP1 ADO GUID Changes
Browser	Microsoft Internet Explorer 7.0 or later
Privileges	Administrative privileges on the system

Distribution Systems

AdminStudio supports distribution of both applications and packages.

Application Distribution

AdminStudio supports the following distribution systems for the distribution of applications.

Distribution System	Support Version(s)
System Center Configuration Manager	2007, 2012 R2, 2012 R2 SP1
Symantec Altiris Client Management Suite	7.5
Citrix XenApp Server	6.5
AirWatch Server	6.5 [Mobile applications only]
Microsoft App-V Server	5.0
 <p>Note • In order for you to distribute packages to a Microsoft App-V Server, the WinRM service must be running, and the App-V Server must be in the list of trusted hosts. Both of these can be accomplished from PowerShell by running the following command:</p> <pre>set-item wsman:\localhost\Client\TrustedHosts -value <Machine Name></pre>	

Package Distribution


AdminStudio supports the following distribution systems for the distribution of packages using the Legacy Distribution Wizard.

Distribution System	Supported Versions
Altiris Notification Server	Version 6.5
LANDESK Management Suite	Version 9
Novell ZENworks Configuration Management	Versions 10 and 11
Microsoft System Center Configuration Manager	2007, 2012 R2, and 2012 R2 SP1

Application Catalog Database Server

The following table lists the recommended system configuration for a database server to store AdminStudio Application Catalog databases.


Item	Description
Processor	32-bit or 64-bit processor at 2 GHz or greater
RAM	4 GB or greater (8 GB preferred)
Hard Disk Space	80 GB or greater
Operating System	Windows Server 2008 R2 or later (Windows Server 2012 preferred)
Database Software	<p>SQL Server 2008 R2 or later databases, including SQL Server 2012 and SQL Server 2014 (latest version preferred).</p> <ul style="list-style-type: none"> Dictionary sort order—SQL Server must be installed with case-insensitive dictionary sort order 52 on Code Page 1252 for non-Unicode data. For more information, use the <code>sp_helpsort</code> T-SQL command, which returns the following: <p style="margin-left: 20px;">Latin1-General, case-insensitive, accent-sensitive, kanatype-insensitive, width-insensitive for Unicode Data, SQL Server Sort Order 52 on Code Page 1252 for non-Unicode data</p> Collation setting—SQL_Latin1_General_CP1_CI_AS is the required collation setting for AdminStudio database server. It is the only supported collation.

 **Note** • Before attempting to connect to an existing Microsoft SQL Server, open SQL Server Configuration Manager and make sure that the following three protocols are enabled:

- Shared Memory
- Named Pipes
- TCP/IP

AdminStudio Enterprise Server / Workflow Manager Server

The following table lists the system requirements for the Web server that hosts the Workflow Manager Data Web service and the actual Workflow Manager Web site and/or AdminStudio Enterprise Server:

Item	Description
Processor	32-bit or 64-bit processor at 2 GHz or greater  Note • AdminStudio Enterprise Server / Workflow Manager runs in 32-bit mode on a 64-bit OS.
RAM	4 GB or greater (8 GB preferred)
Hard Disk Space	100 GB or greater
Operating System	Windows Server 2008 R2 or later / English base language (Windows Server 2012 preferred)
IIS	IIS 7.0 or later
.NET	.NET Framework 4.0
MSXML	MSXML 4.0

Software Repository

The following tables lists the recommended system configuration for the machine that stores the Software Repository files.

Item	Description
Processor	1 GHz or greater
RAM	2 GB or greater
Hard Disk Space	500 GB or greater
Operating System	Windows 8, Windows 7, Windows Vista, or Windows Server 2008 or later

Automated Application Converter

This section lists the requirements for the virtual machines used by Automated Application Converter to perform repackaging. Also, the software requirements for specific virtual technologies are listed.

- [Virtual Machine Requirements](#)
- [Virtual Technology Requirements](#)

Virtual Machine Requirements



Edition • *Automated Application Converter is included with AdminStudio Application Virtualization.*

Automated Application Converter performs automated repackaging on virtual machines. This section lists the virtual machine platform and virtual machine image system requirements.

- [Supported Virtual Machine Platforms](#)
- [VMware Requirements](#)
- [Microsoft Hyper-V Server Requirements](#)
- [Virtual Machine Image Requirements](#)

Supported Virtual Machine Platforms

The Automated Application Converter supports automated repackaging on virtual machines from the following platforms:

- VMware ESX/ESXi Server, Version 3.5 Update 3 or later
- VMware Workstation 6.5 or later
- VMware vSphere 5.5
- Microsoft Hyper-V Server 2008 R2 or later

VMware Requirements

As described above, Automated Application Converter supports automated repackaging on VMware ESX/ESXi Server and VMware Workstation.

- [VMware VIX API Requirement](#)
- [VMware ESX/ESXi Server Permission Requirements](#)
- [vSphere 5.5 Account Requirements](#)

VMware VIX API Requirement

In order for Automated Application Converter to perform automated repackaging, it needs to communicate with the virtualization technology that you are using. If you are using VMware virtualization technology (VMware ESX or ESXi Server or a local VMware Workstation), the VMware VIX API needs to be installed on the same machine as the Automated Application Converter. You can do this by either installing VMware Workstation on that machine or by downloading and installing the VMware VIX API from the following location:

<http://www.vmware.com/support/developer/vix-api>



Note • *When using VMware Workstation, it is recommended that you install VMware Workstation on the same machine as Automated Application Converter so that Automated Application Converter will use the version of the VIX API that was designed for that specific version of VMware Workstation. Although it is likely that newer versions of the VIX API will also work, it seems that the best approach is for Automated Application Converter to use the version of the VIX API that was bundled with your version of VMware Workstation.*

VMware ESX/ESXi Server Permission Requirements

If you plan to use a VMware ESX/ESXi Server in conjunction with Automated Application Converter, make sure that the account that you use to log in to this server has the permissions/roles needed to automatically open a VM using VMware VIX API. The account needs to either have an administrator role assigned or, at least, have the following three roles assigned:

- All Privileges/Virtual Machine/State/Create Snapshot
- All Privileges/Virtual Machine/State/Delete Snapshot
- All Privileges/Virtual Machine/Interaction/Console Interaction

If the login account does not have these permissions/roles, Automated Application Converter will be unable to automatically boot up a virtual machine on that server.

vSphere 5.5 Account Requirements

In order to make Automated Application Converter (AAC) work with VMware virtual machines residing under vSphere 5.5, there are certain minimum permissions required for the vSphere user account. To assign these permissions to a vSphere user account, perform the following steps:



Task: *To configure a vSphere 5.5 account to be used with Automated Application Converter:*

1. In vSphere 5.5, open the **Assign Permissions** dialog box and assign a user the **Virtual machine power user (sample)** role, which consists of the following permissions:

Category	Permission
Datastore	<ul style="list-style-type: none"> • Browse datastore
Global	<ul style="list-style-type: none"> • Cancel task
Scheduled task	<ul style="list-style-type: none"> • Create task • Modify task • Remove task • Run task
Virtual machine > Configuration	<ul style="list-style-type: none"> • Add existing disk • Add new disk • Add or remove device • Advanced • Change CPU count • Change resource • Disk lease • Memory • Modify device settings • Remove disk • Rename • Reset guest information • Settings • Upgrade virtual machine compatibility
Virtual machine > Interaction	<ul style="list-style-type: none"> • Answer question • Configure CD media • Configure floppy media • Console interaction • Device connection • Guest operating system management by VIX API • Power off • Power on • Reset • Suspend • VMware Tools install
Virtual machine > Snapshot management	<ul style="list-style-type: none"> • Create snapshot • Remove snapshot • Rename snapshot • Revert to snapshot

2. Also give the user account read-only access to the rest of the server.

Microsoft Hyper-V Server Requirements

As described above, Automated Application Converter supports automated repackaging on Microsoft Hyper-V Server. When preparing a Hyper-V Server for use with Automated Application Converter, make sure that the following conditions are met:

- **Configuration tools**—Verify that the Hyper-V configuration tools are installed on the Hyper-V server machine. These tools can be installed using the Microsoft Hyper-V Management Console.
- **Connection**—Verify that you can successfully connect to the Hyper-V Server from the machine where AdminStudio Automated Application Converter is installed.
- **Permissions**—Make sure that the Hyper-V Server user has the following permissions to perform operations on the Hyper-V machines:
 - Permission to create/restore/delete VM snapshots
 - Permission to start and stop virtual machines
 - Permission to access console sessions
- **Configuration settings**—Connecting to a WMI namespace on a remote computer running Windows Vista or Windows Server 2008 may require changes to configuration settings. Check the following configuration settings on the AdminStudio machine as well as on the Hyper-V Server machine:
 - Windows Firewall Settings
 - User Account Control (UAC) Settings
 - DCOM Settings
 - Common Information Model Object Manager (CIMOM) Settings

For detailed information, see [Connecting to WMI Remotely](#) at:

[http://msdn.microsoft.com/en-us/library/aa822854\(VS.85\).aspx](http://msdn.microsoft.com/en-us/library/aa822854(VS.85).aspx)

Virtual Machine Image Requirements

Automated Application Converter uses virtual machines to perform automated repackaging. These virtual machines have the following requirements:

Virtual Machine System Requirements

When creating a virtual machine image that will be hosted on one of the virtual machine platforms listed above, the recommended minimum requirements should meet those required by the applications you are trying to repackage. Since you repackage on the target deployment platform, the virtual machine image should closely resemble the target deployment environment.

Preparing Your Virtual Machines for Use With the Automated Application Converter

You need to prepare each virtual machine that you are going to use with the Automated Application Converter to perform automated repackaging by running the Virtual Machine Preparation setup and by creating a snapshot. For instructions, see [Preparing Your Virtual Machines for Use With the Automated Application Converter](#).

Virtual Technology Requirements

In order to convert to some virtual formats, there are some software requirements:

Virtual Format	Requirement
App-V 5.0	<ul style="list-style-type: none"> • Conversion—To convert a package to App-V 5.0 format using Automated Application Converter's App-V 5.x with Sequencer method, the Microsoft Application Virtualization 5.0 Sequencer must be installed on the virtual machine where the conversion will take place. • Upgrade—To upgrade an imported App-V 4.x package to App-V 5.0 format directly from Application Manager using the App-V Upgrade Wizard, the Microsoft Application Virtualization 5.0 Sequencer must be installed on the same machine as AdminStudio. • Testing—To test an App-V package using Automated Application Converter, the Microsoft Application Virtualization 5.0 Client must be installed on the same machine as AdminStudio.
VMware ThinApp	To convert a package to VMware ThinApp format, VMware ThinApp must be installed on the same machine as AdminStudio, and all license agreements must have been accepted.
Symantec Workspace	To convert a package to a Symantec Workspace virtual package, the Symantec Workspace Virtualization Agent must be installed on the same machine as AdminStudio.

Downloading AdminStudio Installers

If you have the AdminStudio DVD, all of the AdminStudio installers are on the DVD and you can find them using the DVD Browser.

However, if you do not have the AdminStudio DVD, you can download the installers for AdminStudio, AdminStudio Service Packs, Standalone Repackager, Standalone Quality Monitor, and the FlexNet Licensing Server from the **Flexera Software Product and License Center**:

<https://flexerasoftware.flexnetoperations.com>

For information on using the Flexera Software Product and License Center, see the **Download and License Overview for AdminStudio**:

<http://www.flexerasoftware.com/downloads/instructions/productlicensing/en/adminstudio.htm>

AdminStudio 2015 SP1 Evaluation Restrictions

When you run AdminStudio in trial/evaluation mode, all of the features in the AdminStudio Enterprise Edition client tools are fully available, with the following restrictions:

- **Can create only one Application Catalog**—You are permitted to create only one Application Catalog, and it must be named *AdminStudio Evaluation Catalog*.
- **Ten package import limit**—Only 10 total packages (of one or more deployment types) can be imported into the Application Catalog.
- **Package deletion not permitted**—After you import a package into the Application Catalog, you are not permitted to delete it.
- **AdminStudio Platform API support is disabled**—All platform support is disabled.

Resolved Issues

This section lists the customer issues that were resolved in the following versions of AdminStudio:

- [AdminStudio 2015 SP1](#)
- [AdminStudio 2015](#)

AdminStudio 2015 SP1

The following table lists the customer issues that were resolved in AdminStudio 2015 SP1:

Issue Number	Issue Summary
IOJ-1643279	Request for the list of device requirements displayed in the Application Manager Requirements Wizard to exactly match the list of device requirements in System Center Configuration Manager.
IOJ-1700304	When using Repackager to capture a package that contains advertised shortcuts, Repackager should place the shortcuts in the *.exe component rather than in an empty shortcut component so that the keypath will resolve correctly.
IOJ-1727009	If a component that contains a 64-bit file has a destination of INSTALLDIR, the 64-bit component flag is set to NO, and warnings are generated at build.
IOJ-1728863	AdminStudio passes the wrong parameters to App Portal, which causes App Portal to fail when linking an Altiris package with a catalog item.
IOJ-1728975	Request to provide the ability to import and test web applications on a machine behind a proxy server.
IOJ-1729498	Update the platform API documentation regarding importing packages from System Center Configuration Manager.
IOJ-1731311	Failure to create a software tag transform when importing a Windows Installer package.
IOJ-1733541	Desktop App Virtualization Compatibility report not showing up for AdminStudio database hosted on SQL Server running different collation than SQL_Latin1_General_CP1_CI_AS.
IOJ-1734768	The Invoke-ASImportPackage command does not set the InstallCommandLine for EXE packages.
IOJ-1736718	Request to enable distributer.exe to specify a full path to an Applications group location to distribute packages to, rather than distributing to the first Applications group that it finds.

Issue Number	Issue Summary
IOJ-1736873	When you run only the ThinApp 5.x tests in Test Center, no information is displayed in the Report Center Virtualization Compatibility report. It appears as if the test has not been run, even though ThinApp 5.x test results are displayed in Test Center. However, if you run both the ThinApp 4.x and ThinApp 5.x tests, then both ThinApp 4.x and ThinApp 5.x information is available in Report Center.
IOJ-1736875	When you run only App-V 5.x tests in Test Center, there is no data available in the Virtualization Compatibility Dashboard. However, if you run both App-V 4.x and App-V 5.x tests, then the graph is populated and the App-V 4 and 5 information is available.
IOJ-1737086	Request to address findings from Microsoft Risk Assessment Program on the AdminStudio SQL Server database.
IOJ-1737552	Virtualization compatibility reports show incorrect results for ThinApp 5.x testing. The ThinApp 5.x results on the graph is always the same as the ThinApp 4.x even if this is not actually the case.
IOJ-1738198	The PATCH property is being set incorrectly on the Install command line when importing a Windows Installer package and patch file (.msp) into the Application Catalog. The property is being set as a relative path to the patch package, when the full path is required.
IOJ-1741519	After installing and activating AdminStudio 2015, before you have connected to an SQL Server, if you try to launch the Application Manager through the links on the Start page, then the shortcut location is incorrect and you receive an error message about a missing file.
IOJ-1742096	Start page does not load when Tuner is launched remotely. You will receive a "web page cannot be displayed" error.
IOJ-1742222	If you import an .exe file created with Wise Package Studio into the Application Catalog, the name of that application displayed Application Manager includes all the information extracted from the package, making it a very long name. The name should match the package name.
IOJ-1742486	When using SmartScan, an additional shortcut is created, and an erroneous description is added to the shortcuts.
IOJ-1742487	SmartScan Wizard generates unspecified errors.

AdminStudio 2015

The following table lists the customer issues that were resolved in AdminStudio 2015:

Issue Number	Issue Summary
IOA-000067722	Allow AppV builds to handle file source paths and package release paths longer than 255 characters.
IOA-000124942	Suppressing test results in Test Center is slower against remote SQL databases than local databases.
IOA-000125272	Request for a permission to block ability of user to upgrade an AdminStudio Application Catalog database.
IOC-000072895	Increase performance for expanding groups in Application Manager.
IOJ-1660737	Automated Application Converter returns different results for files going to GAC on each run; the number of files in the GAC is different.
IOJ-1661106	Repackaging installers made with Bitrock results in shortcut icons not resolving properly.
IOJ-1663060	After upgrade, the Application Catalog database is showing unexpected behavior. Existing groups do not appear in the Catalog tab view.
IOJ-1664158	Repackager Snapshot Method creates incorrect Shortcut description.
IOJ-1664162	Repackager unable to pull icon *.ico files from a setup on a 64-bit machine.
IOJ-1664381	Request for enhancement to shortcut handling by Repackager Installation Monitoring method. When using the Installation Monitoring method, Repackaging Wizard captures start menu shortcuts in such a way that they don't show up on the InstallShield Editor's Project Assistant tab's Application Shortcuts view.
IOJ-1664382	Issues occurring when attempting to import App-V packages that were created by Microsoft's App-V Sequencer.
IOJ-1664908	Application Manager does not support the import of packages with an apostrophe in its name.
IOJ-1665049	Specific *.sft results in Application Manager crash (AdminStudioHost Process crashes) during import and Virtual Package Editor crash when attempting to open.
IOJ-1665187	Repackager created invalid entries in Directory table which caused install error 1606.

Issue Number	Issue Summary
IOJ-1665600	After creating a custom condition with the Global Condition wizard this condition can be used as a custom requirement on a package. If you distribute this package to System Center Configuration Manager, it is unable to add the requirement and simply shows the message, "Could not add Requirement to Deployment Type"
IOJ-1665717	Request to make Automatic Application Converter's (AAC) AppVAllFilesInVFS setting be the default.
IOJ-1665718	When using Automated Application Converter, you are unable to use a variable for the name of a data store; Automated Application Converter hard-codes the data store name.
IOJ-1665772	Application Manager scalability and performance issues when Application Catalog contains large number of applications.
IOJ-1666522	Modifying an App-V Package with Virtual Package Editor Results in 1400000007 error.
IOJ-1666530	Request to prevent Repackager from deleting the contents of Output location.
IOJ-1666958	Documentation error in the example on Set-ASConfigPlatform.
IOJ-1666960	Documentation error in the example on "Example Script to Create Application Catalog, Import Packages, and Perform Testing."
IOJ-1699591	AppV 4-5 conversion does not detect that PS 3 is not present and reports false success for conversion.
IOJ-1699634	Virtual Package Editor > Save as a new package always sets minimum client version to 5.0.285.0.
IOJ-1700290	Import fails for internal website that uses Windows Authentication to automatically sign on.
IOJ-1700292	App-V package created by InstallShield/AdminStudio from a Windows Installer package that includes a directory name ending with period does not run successfully.
IOJ-1700948	Enable the LOCAL_INTERACTION_ALLOWED XML tag to be set within the Virtual Package Editor for App-V 5 packages.
IOJ-1718398	Saving an App-V package with Virtual Package Editor removes the dynamic scripts from the App-V package.
IOJ-1718798	Repackager produces MSIs that contain too many subfeatures.
IOJ-1719352	Automated Application Converter fails to find virtual machines in Hyper-V in non-English operating system.

Issue Number	Issue Summary
IOJ-1719480	<p>Accessing Workflow from AdminStudio returns to login screen.</p> <p>When customer tries to access Workflow Manager through the Enterprise tab within AdminStudio in order to search for a workflow, they are prompted to logon, even though they are already logged on.</p>
IOJ-1720281	<p>User Guide mistakenly states that you can use Virtual Package Editor to create a new App-V package.</p>
IOJ-1720626	<p>Automated Application Converter on a Windows Server OS with the Remote Desktop Services role enabled causes the Repackaging Installation Monitoring to fail.</p>
IOJ-1720733	<p>The application tree does not show all the applications after upgrading the Application Catalog from AdminStudio 11.5 to AdminStudio 2014.</p>
IOJ-1722000	<p>The "Full VFS Write Mode" option in Automated Application Converter does not seem to function as expected</p>
IOJ-1722865	<p>Importing a web application with "&" in the URL causes the Package History report to fail.</p>
IOJ-1722938	<p>Customer is requesting the ability to change the "Require Software Entitlement" setting of a Software Identification Tag from within the Application Manager. Currently this setting is only available from within InstallShield.</p>
IOJ-1723093	<p>Imported web sites store passwords in plain text.</p>
IOJ-1723103	<p>Flexera Service Gateway installer tries to install Java 1.6 even when a higher version of Java is already installed.</p>
IOJ-1723537	<p>When distributing a package from AdminStudio to System Center Configuration Manager, the program command line always passes /q at the end.</p>
IOJ-1724715	<p>Security patches fail to import with error: "Object reference not set to an instance of an object."</p>
IOJ-1725754	<p>Repackager Snapshot Method captures ProgramData twice.</p>
IOJ-1725758	<p>Repackager Snapshot Method shows file copy errors during the post-install scan.</p>
IOJ-1725941	<p>App-V packages created using the AdminStudio method do not honor the PATH environment variable.</p>
IOJ-1726231	<p>Error when attempting to reactivate a subscription license that will expire in 3 days.</p>

Issue Number	Issue Summary
IOJ-1726341	Repackaging Wizard's Snapshot Method captures path environment variables twice.
IOJ-1726971	Changing the "Path to Original Setup" in Repackager interface results in the COM information not being populated for a DLL in the .ism / .msi file.
IOJ-1728863	AdminStudio passes the wrong parameters to App Portal, which causes App Portal to fail while linking an Altiris Package with a catalog item.
IOJ-1729157	In Test Center, the overall test state is not refreshing when testing is run again after turning off the tests which throw errors.
IOJ-1731308	After updating the Package Auto Import path in Application Manager, the path appears to be changed in the interface; however, the packages are never imported from the new directory.
IOJ-1731437	Transform created through Tuner only create CAB files of size 28.6 MB.

Known Issues

For a complete list of known issues that pertain to the AdminStudio 2015 SP1 release, see the AdminStudio Support Knowledge Base article at:

https://flexeracomunity.force.com/customer/articles/en_US/INFO/AdminStudio-2015-Known-Issues