



AdminStudio Enterprise Server 2016 Installation Guide

Legal Information

Version: AdminStudio Enterprise Server 2016 Installation Guide
Part Number: ASES-2016-IG00
Product Release Date: 12 July 2016

Copyright Notice

Copyright © 2016 Flexera Software LLC. All Rights Reserved.

This publication contains proprietary and confidential information and creative works owned by Flexera Software LLC and its licensors, if any. Any use, copying, publication, distribution, display, modification, or transmission of such publication in whole or in part in any form or by any means without the prior express written permission of Flexera Software LLC is strictly prohibited. Except where expressly provided by Flexera Software LLC in writing, possession of this publication shall not be construed to confer any license or rights under any Flexera Software LLC intellectual property rights, whether by estoppel, implication, or otherwise.

All copies of the technology and related information, if allowed by Flexera Software LLC, must display this notice of copyright and ownership in full.

Intellectual Property

For a list of trademarks and patents that are owned by Flexera Software, see <http://www.flexerasoftware.com/intellectual-property>. All other brand and product names mentioned in Flexera Software products, product documentation, and marketing materials are the trademarks and registered trademarks of their respective owners.

Restricted Rights Legend

The Software is commercial computer software. If the user or licensee of the Software is an agency, department, or other entity of the United States Government, the use, duplication, reproduction, release, modification, disclosure, or transfer of the Software, or any related documentation of any kind, including technical data and manuals, is restricted by a license agreement or by the terms of this Agreement in accordance with Federal Acquisition Regulation 12.212 for civilian purposes and Defense Federal Acquisition Regulation Supplement 227.7202 for military purposes. The Software was developed fully at private expense. All other use is prohibited.

Contents

1	AdminStudio Enterprise Server 2016 Installation Guide	5
	Using Help	6
	Contacting Us	6
2	System Requirements	7
	System Requirements	7
	AdminStudio Enterprise Server	8
	AdminStudio Database Server	8
	AdminStudio Enterprise Server End User Computers	9
	Database Server Permissions	10
	Installing Internet Information Services (IIS)	12
3	Installing AdminStudio Enterprise Server	13
	Preparing to Install	13
	Checking System Requirements	14
	Obtaining Your License File	15
	Gathering Required Information	16
	Enabling Roles and Features in Windows Server 2012	17
	Running the AdminStudio Enterprise Server Installer	19
	Using Scripts to Create or Update an AdminStudio Database	23
	Using Scripts to Create the AdminStudio Database	24
	Using Scripts to Upgrade Existing AdminStudio Tables	27
4	Configuring AdminStudio Enterprise Server	33
	Configuring Using the AdminStudio Configuration Wizard	33
	Specifying Mandatory Configuration Settings	34
	Setting Advanced Configuration Settings	40
	Launching AdminStudio Enterprise Server	44

Performing Other Configuration Tasks45

 Additional Verification Steps After Installation..... 45

 Enabling Login to AdminStudio Enterprise Server Using Windows NT Authentication 46

Index 47

AdminStudio Enterprise Server 2016 Installation Guide

Information about installing AdminStudio Enterprise Server is presented in the following sections:

Table 1-1 • Installing AdminStudio Enterprise Server

Topic	Content
System Requirements	Lists the hardware and software requirements for the components of AdminStudio Enterprise Server.
Installing AdminStudio Enterprise Server	Explains how to perform installation preparation tasks, and how to install AdminStudio Enterprise Server.
Configuring AdminStudio Enterprise Server	Performing post-installation configuration tasks, including how to use the AdminStudio Configuration Wizard.

Using Help

Help is available both from the product interface and directly from certain individual interface elements.

When you have questions about this product, first consult the / AdminStudio Enterprise Server Help Library, which is the complete user's guide for using the product.

Web-Based Online Help

Web-based online help is available to you 24 hours a day, seven days a week, on our Web site at:

<http://helpnet.flexerasoftware.com>

Documentation as PDF

AdminStudio and documentation is also available as a PDF. Visit the Flexera Software Documentation Center at:

<https://flexeracommunity.force.com/customer/CCDocumentation>

Contacting Us

Flexera Software is headquartered in Itasca, Illinois, and has offices worldwide. To contact us or to learn more about our products, visit our website at:

<http://www.flexerasoftware.com>

2

System Requirements

Before beginning the installation, review the following hardware and software requirements. This information is presented in the following sections:

- [System Requirements](#)
- [Database Server Permissions](#)
- [Installing Internet Information Services \(IIS\)](#)

System Requirements



This section lists the system requirements for AdminStudio Enterprise Server.

- [AdminStudio Enterprise Server](#)
- [AdminStudio Database Server](#)
- [AdminStudio Enterprise Server End User Computers](#)

AdminStudio Enterprise Server

The following table lists the system requirements for the Web server that hosts AdminStudio Enterprise Server.

Table 2-1 • AdminStudio Enterprise Server

Item	Description
Processor	32-bit or 64-bit processor at 2 GHz or greater.  Note • AdminStudio Enterprise Server runs in 32-bit mode on a 64-bit OS.
RAM	4 GB or greater (8 GB preferred)
Hard Disk Space	100 GB or greater
Operating System	Windows Server 2008 R2 or later / English base language (Windows Server 2012 preferred)
IIS	IIS 7.0 or later
.NET Framework	.NET Framework 4.6.1 or later
ASP.NET	ASP.NET 4.0.30319 or later
MSXML	MSXML 6.0  Note • MSXML is installed by the AdminStudio Enterprise Server installer.


AdminStudio Database Server

This following table lists the recommended system configuration for an AdminStudio Application Catalog database server:

Table 2-2 • AdminStudio Database Server

Item	Description
Processor	32-bit or 64-bit processor at 2 GHz or greater
RAM	4 GB or greater (8 GB preferred)
Hard Disk Space	80 GB or greater
Operating System	Windows Server 2008 R2 or later (Windows Server 2012 preferred)

Table 2-2 • AdminStudio Database Server

Item	Description
Database Software	<p>SQL Server 2008 R2 or later databases, including SQL Server 2012 and SQL Server 2014 (latest version preferred)</p> <ul style="list-style-type: none"> Dictionary sort order—SQL Server must be installed with case-insensitive dictionary sort order 52 on Code Page 1252 for non-Unicode data. For more information, use the <code>sp_helpsort</code> T-SQL command, which returns the following: Latin1-General, case-insensitive, accent-sensitive, kanatype-insensitive, width-insensitive for Unicode Data, SQL Server Sort Order 52 on Code Page 1252 for non-Unicode data Collation setting—<code>SQL_Latin1_General_CP1_CI_AS</code> is the required collation setting for AdminStudio database server. It is the only supported collation. <p> Note • Before attempting to connect to an existing Microsoft SQL Server, open SQL Server Configuration Manager and make sure that the following three protocols are enabled:</p> <ul style="list-style-type: none"> Shared Memory Named Pipes TCP/IP

AdminStudio Enterprise Server End User Computers

This following table lists the recommended system configuration for an AdminStudio Enterprise Server end user machine:

Table 2-3 • AdminStudio Enterprise Server End User Computers

Item	Description
Browser	<ul style="list-style-type: none"> Microsoft Internet Explorer 9.0 or later Chrome for Windows 33.0 or later Firefox for Windows 25.0 or later Safari for Mac OS X and iOS

Database Server Permissions

In order to operate some AdminStudio tools, AdminStudio users require specific database permissions. Depending upon the type of user, you may wish to be more selective in the permissions you assign to these users.

You can assign permissions to individual users using the Role functionality in AdminStudio Enterprise Server, as described in the *AdminStudio and Roles and Permissions* topic in the online help library. Otherwise, you can provide more selective restrictions at the database server level using the information in the following *AdminStudio Database Server Permissions* table.

Every AdminStudio user will need at a minimum read privilege to every table in the Application Catalog. The minimum permissions are described below, based upon the type of operation you want the user to perform.

Table 2-4 • AdminStudio Database Server Permissions

Type	Description
General User Administrative Process	<p>General administrative processes cover a range of activities such as adding groups, moving packages around, adding comments, updating extending attributes, etc. For example, these tables include cstblPackage, cstblGroups, and cstblGroupPackages. Any Application Catalog table which is not referenced explicitly in the discussion for the other AdminStudio processes should be considered a general user administrative table.</p> <p>Most AdminStudio users should have write access to these tables.</p>
Import Process	<p>The user importing MSI packages, merge modules, or just about anything will require write access to a significant set of Application Catalog tables depending on the type of import. For example:</p> <ul style="list-style-type: none"> ● MSI package file—For MSI package file import operations, those Application Catalog tables with a csmsi prefix are populated. ● Merge modules—For merge module import operations, the csmsm prefixed tables are used. ● Patches—For patch import operations, the cspch prefix tables are used. ● OS snapshots—For OS snapshot import operations, the osc prefix tables are used. <p>Occasionally, the Import process will need to create new tables in the Application Catalog to support the import of custom table data. Either the necessary server privileges need to be given for these users, or the import of custom table data needs to be disabled within the Application Manager Options dialog box.</p>
Validation Process	<p>For this process, the user will need to be able to write entries into the cstblValidationResults and cstblValidationConfiguration tables.</p>
Dependency Scanning Process	<p>For this process, the user will need to be able to write entries into the cstblPackageExeDependencies table.</p>
Conflict Detection and Resolution Process	<p>For this process, the user will need to be able to write entries into the cstblConflict prefixed table names.</p>

Table 2-4 • AdminStudio Database Server Permissions (cont.)

Type	Description
Patch Impact Analysis Process	For this process, the user will need to be able to write entries into the cstblPatchConflict prefixed table names. This process will create and delete some temporary tables and, as such, the user performing this process should have the necessary server privileges to perform these operations.
Package Auto Import Process	The Package Auto Import process will ultimately generate a series of Import operations, and so the user performing these operations should have the Import process rights described above. If the user wants to edit these operations in the Wizard, then they will need write accession to the cstblSubscribed prefixed tables.
Workflow Operations Process	For this process, the user will need to be able to write entries into the wftbl prefixed table names.
Tools Properties Operations	For this process, the user will need to be able to write entries into the wftblTools table name.
Job Manager Process	For this process, the user will need to be able to write entries into the As prefixed table names.
Pre-Deployment Testing	For this process, the user will need to be able to write entries into the pdt prefixed table names.



Note • A number of processes within AdminStudio generate data which can subsequently be deleted by the AdminStudio user. Any discussion of the minimum privileges required for a specific AdminStudio process will also imply the privileges to delete this same data.

Installing Internet Information Services (IIS)

Internet Information Services (IIS) Version 7 or later is required to be installed on the machine on which you are installing AdminStudio Enterprise Server.

For instructions on how to install IIS, see the following information on the Microsoft web site:

- **Installing IIS 7 on Windows Server 2008 or Windows Server 2008 R2**
<http://www.iis.net/learn/install/installing-iis-7/installing-iis-7-and-above-on-windows-server-2008-or-windows-server-2008-r2>
- **Installing IIS 8 on Windows Server 2012**
<http://www.iis.net/learn/get-started/whats-new-in-iis-8/installing-iis-8-on-windows-server-2012>

Installing AdminStudio Enterprise Server

This chapter explains how to install AdminStudio Enterprise Server, and also how to use scripts to either create or upgrade an existing database.

- [Preparing to Install](#)
- [Running the AdminStudio Enterprise Server Installer](#)
- [Using Scripts to Create or Update an AdminStudio Database](#)



Tip • For a complete list of known issues that pertain to the AdminStudio, see the [AdminStudio Support Knowledge Base](#).

Preparing to Install

Before running the AdminStudio Enterprise Server installation, perform these tasks:

- [Checking System Requirements](#)
- [Obtaining Your License File](#)
- [Gathering Required Information](#)
- [Enabling Roles and Features in Windows Server 2012](#)

Checking System Requirements

AdminStudio Enterprise Server components should be installed on a dedicated server. To perform a successful installation, check the [System Requirements](#) to make sure that the following requirements have been met:

Table 3-1 • System Requirements Summary

Item	Requirement
Database Server	Make sure that you have an SQL Server which meets the requirements listed in AdminStudio Database Server . Check that this SQL Server is running properly by launching the Enterprise Manager and connecting to the server.
Database Server Account	Make sure you have a database owner account ID and password for the SQL Server that you are installing the AdminStudio Enterprise Server database on.
AdminStudio Enterprise Server	The machine on which you will be installing AdminStudio Enterprise Server must meet the hardware and software requirements specified in AdminStudio Enterprise Server .
Internet Information Services (IIS)	Internet Information Services (IIS) must be installed on the machine on which you will be installing AdminStudio Enterprise Server before you will be permitted to run the installation. See Installing Internet Information Services (IIS) .
.NET Framework	The .NET framework is required to be installed on the machine on which you will be installing AdminStudio Enterprise Server. However, if the .NET framework has not yet been installed on that machine, it will be installed as part of the installation.
Domain Account	<p>The Domain Account is used for uploading and downloading files and for sending emails. Any operation that needs higher privileges is performed by impersonating the Domain Account.</p> <p>You can set the name of this Domain Account or specify an existing user as the Domain Account on the Logon Information Panel.</p>

Obtaining Your License File

AdminStudio Enterprise Server is activated by uploading a license file using the AdminStudio Configuration Wizard. When that license expires, or if you purchase additional functionality, you will need to upload an updated license file.

- [Obtaining Your License File](#)
- [Uploading a License File Using the AdminStudio Configuration Wizard](#)

Obtaining Your License File

License files are attached to your order confirmation email that you received from Flexera Software Orders Department. You can also obtain your license file from the Flexera Software Product and License Center. To obtain your AdminStudio Enterprise Server license file, perform the following steps:



Task *To obtain a AdminStudio Enterprise Server license file:*

1. Log on to the **Flexera Software Product and License Center**:
<https://flexerasoftware.flexnetoperations.com>
2. In the left navigation, under **Entitlements**, click **Product List**.
 - If you have access to multiple products, the **Product List** page opens and lists all of the product lines to which your account is entitled. Click the **AdminStudio Enterprise Server** link to proceed to the **Product Information** page.
 - If you do not have access to multiple products, clicking the **Product List** link opens the **Product Information** page directly.
3. In the **Product and File Downloads** column, click the **AdminStudio Enterprise Server** link for the version that you want to download a license file for. The **Product Download** page opens.
4. Open the **Licenses** tab.
5. Click the download button next to the license file.

Uploading a License File Using the AdminStudio Configuration Wizard

After installation, the AdminStudio Configuration Wizard automatically opens and you are prompted to upload a license file. Until you upload the license file, you will be unable to open the AdminStudio Enterprise Server website. Also, when your license file is nearing its expiration date, you will need to use the AdminStudio Configuration Wizard to upload an updated license file. For instructions, see [Configuring Using the AdminStudio Configuration Wizard](#).

Gathering Required Information

To complete the installation of AdminStudio Enterprise Server, you will need the following information. Please print this page and fill in the blanks below for use during the setup. You may need to consult with your network administrator to determine some of this information. Details on this information can be found on the following pages.

Enter the following information specific to the SQL Server database that you are going to use for the AdminStudio Enterprise Server.

Table 3-2 • SQL Server Database Information

Item	Description
SQL Server Name:	
SQL Database Name:	
Database Owner User ID and Password for this SQL Database:	

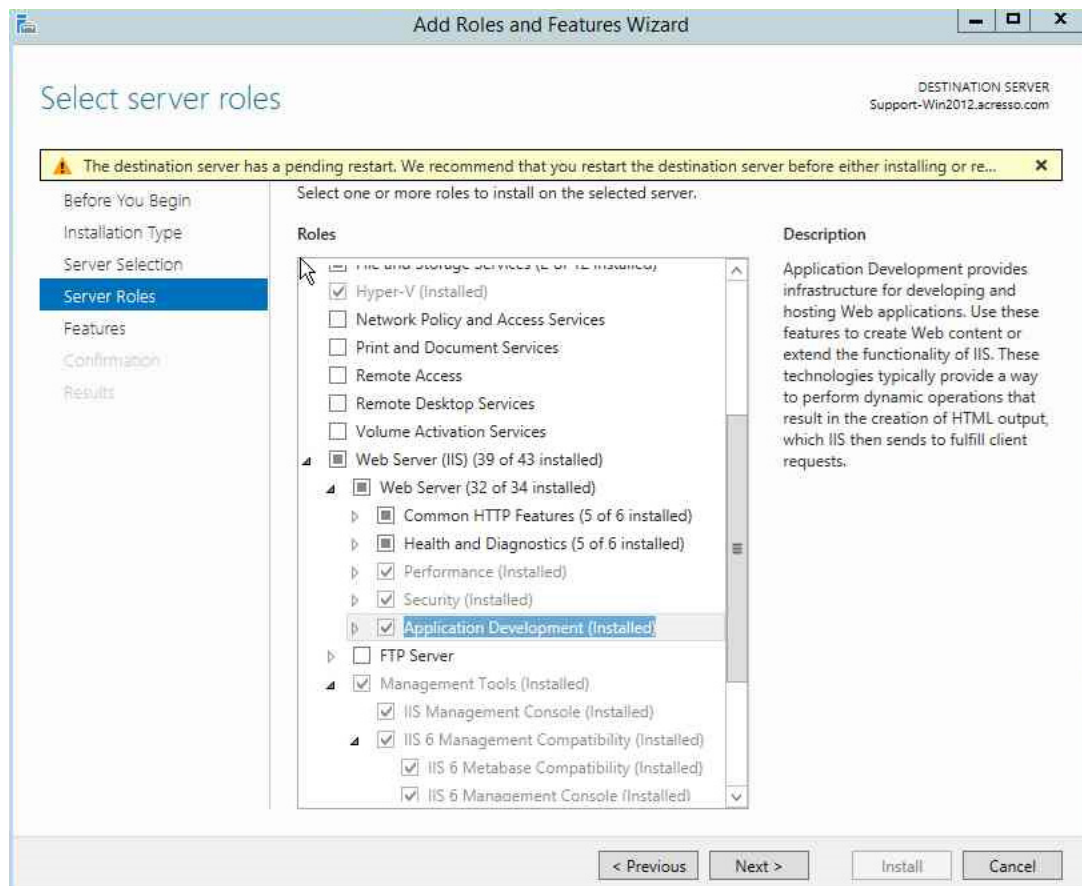
Enabling Roles and Features in Windows Server 2012

If you are installing AdminStudio Enterprise Server on Windows Server 2012, it is recommended that you perform the following steps to enable roles and features.



Task **To enable roles and features in Windows Server 2012:**

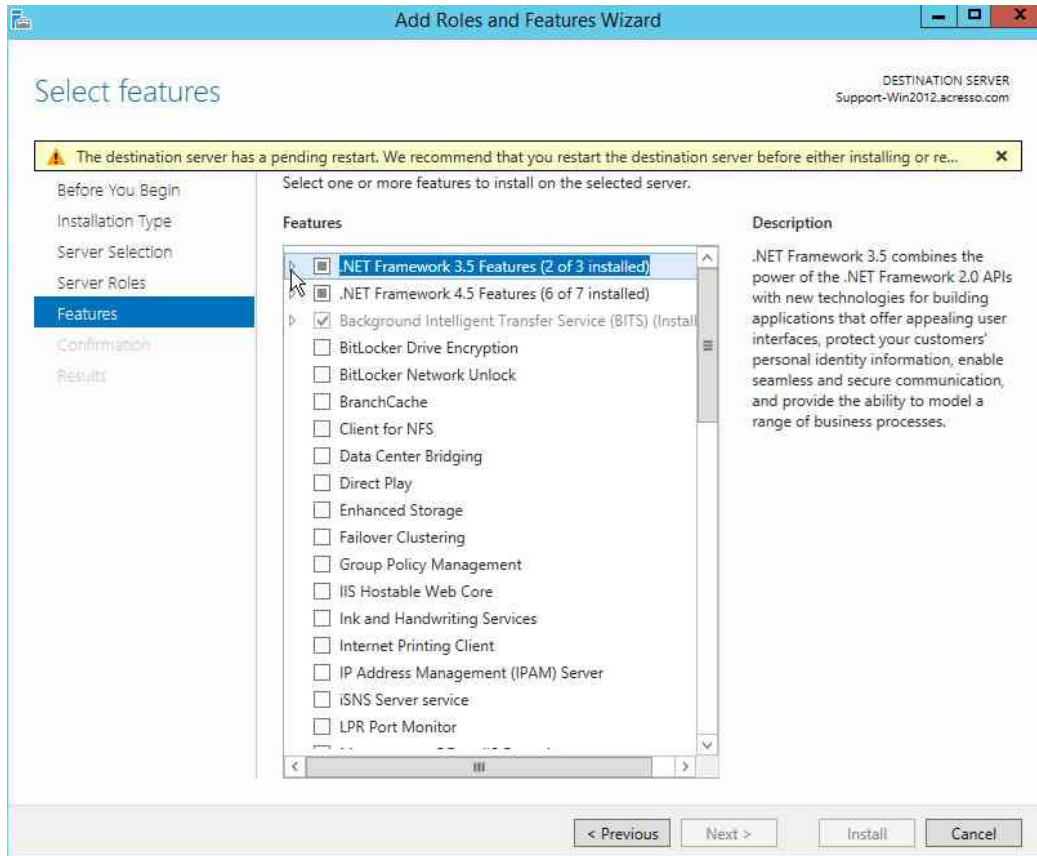
1. Open the Windows Server 2012 Server Manager.
2. Open the **Add Roles and Features** wizard.
3. Select **Server Roles** in the tree. A list of roles is displayed.



4. Under **Server Roles**, expand **Web Server (IIS) > Web Server**, and select all of the roles in the following subsections (except where noted):

- **Application Development**
- **Security**
- **Performance**
- **Health and Diagnostics** (select all subroles except **ODBC Logging**)
- **Common HTTP Features** (select all subroles except **WebDAV Publishing**)

5. Select **Features** in the tree. A list of features is displayed.



6. Under **Features**, select the following features:

- **.NET Framework 3.5 Features**
 - **.NET Framework 3.5 (includes .NET 2.0 and 3.0)**
 - **HTTP Activation**
- **.NET Framework 4.5 Features**
 - **.NET Framework 4.5**
 - **ASP.NET 4.5**
 - **WCF Services** (select all subfeatures except **Message Queuing (MSMQ Activation)**)
- **Background Intelligent Transfer Service**
 - **IIS Server Extension**
 - **Compact Server**
- **SMB 1.0/CIFS File Sharing Support**
- **Windows Process Activation Service**
- **Remote Server Administration Tools > Feature Administration Tools > BITS Server Extensions Tools**
- **WoW64 Support**

Running the AdminStudio Enterprise Server Installer

This section explains how to run the AdminStudio Enterprise Server installation, how to configure it, and how to launch AdminStudio Enterprise Server after installation is complete.



Note • AdminStudio Enterprise Server 2016 can be installed side-by-side an earlier version of AdminStudio Enterprise Server. If you already have AdminStudio Enterprise Server installed, the AdminStudio Enterprise Server 2016 installer will install the application to the next available port.

To install AdminStudio Enterprise Server, perform the following steps.



Task To install AdminStudio Enterprise Server:

1. Launch the installation program. The **Welcome** panel opens.



Note • If you are installing AdminStudio Enterprise Server on a Windows Server 2012 R2 x64 machine and you have not already installed Windows Update for Microsoft KB2919355, you will first see a panel that prompts you to make sure that your machine is up-to-date on all Windows updates before proceeding.

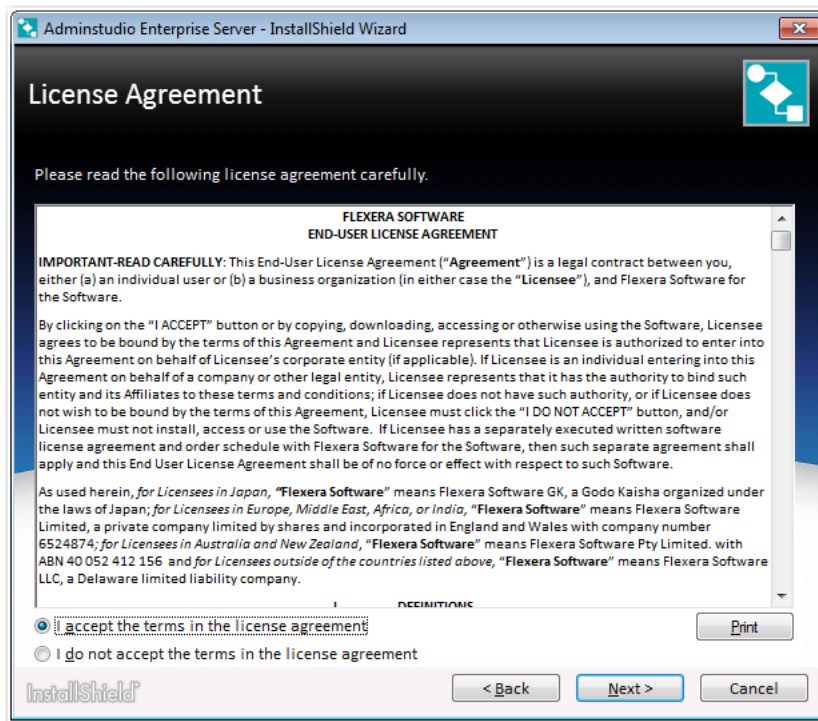


Note • If installing from a compressed version of the installation software, you may be prompted for a password when you attempt to extract the installation program. This password can be found in the Order Confirmation email you received when you purchased this product.

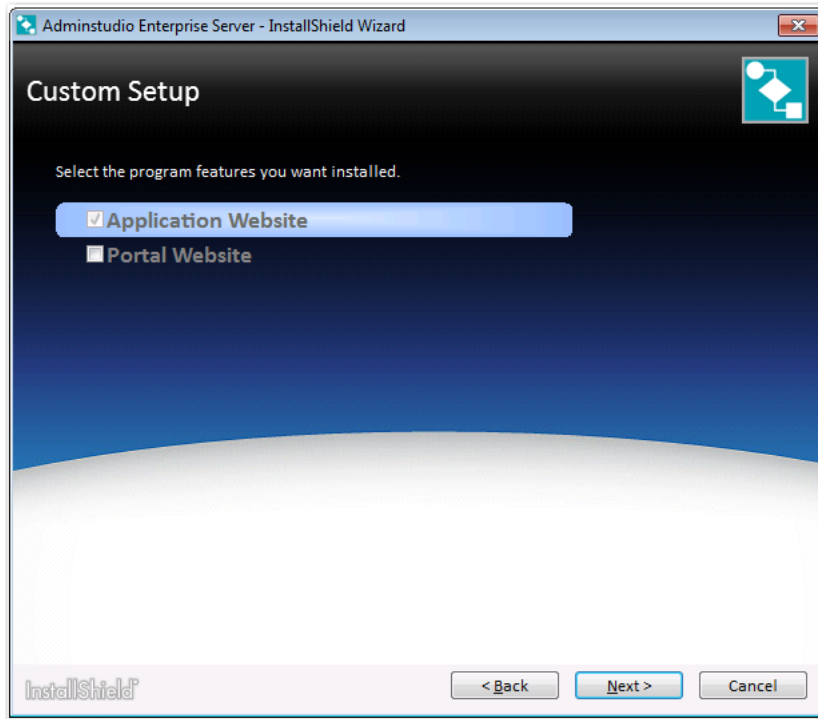


Note • If not already installed, before the **Welcome** panel opens, you will be first prompted to install MSXML, Microsoft .NET Framework Component, and Microsoft ReportViewer.

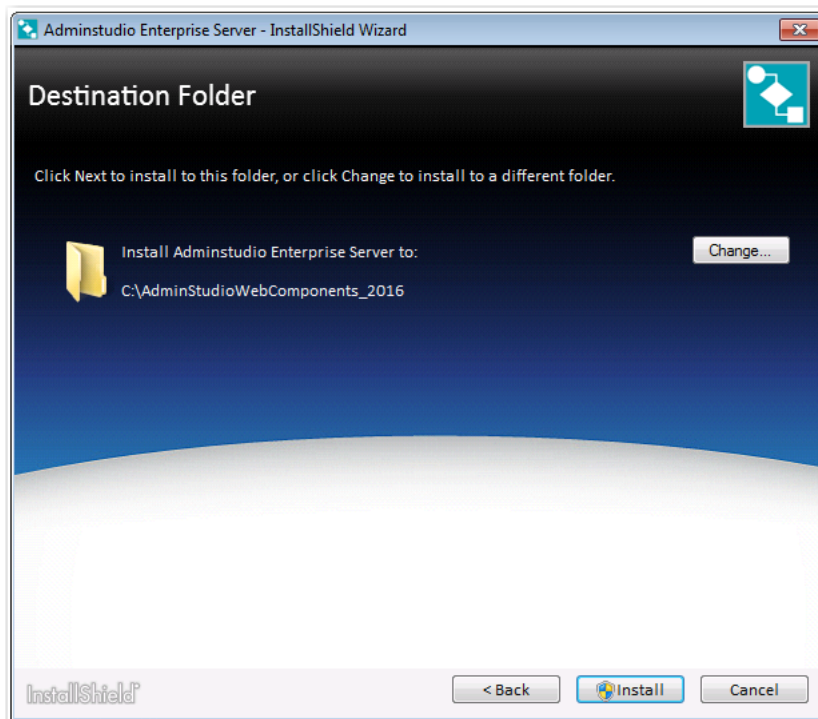
2. Click **Next**. The **License Agreement** panel opens.



3. Select the **I accept the terms of the license agreement** option and click **Install**. The **Custom Setup** panel opens.



4. Select **Application Website** and click **Next**. The **Destination Folder** panel opens.

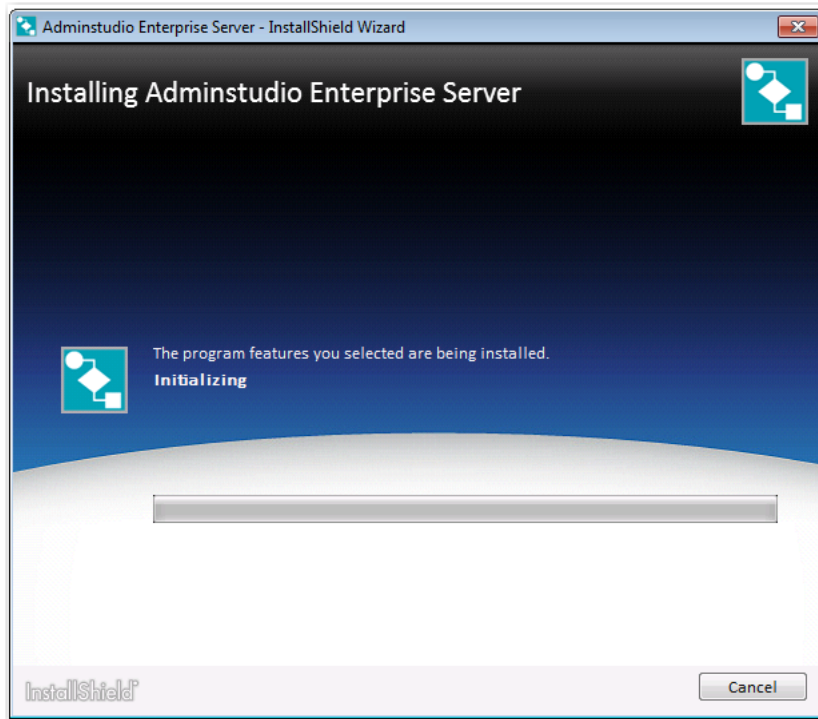


5. If you want to change the default installation directory of AdminStudio Enterprise Server, click the **Change** button and select a different directory.



Important • It is recommended that you do not install AdminStudio Enterprise Server in the Program Files or Program Files (x86) directory.

6. Click **Install**. The **Installing AdminStudio Enterprise Server** panel opens.



Note • A reboot may be required during installation.

When installation is complete, InstallShield Wizard Completed is displayed.

7. Click **Finish** to close the installer and launch the AdminStudio Configuration Wizard.
8. Continue with the steps in [Configuring Using the AdminStudio Configuration Wizard](#).

Using Scripts to Create or Update an AdminStudio Database

Because of security concerns, some database administrators may be hesitant to grant to AdminStudio users the database rights necessary to create or upgrade an Application Catalog database using SQL Server. Consequently, the database administrator must manually create or upgrade the database using scripts and provide the necessary read and write access for users to that database.

AdminStudio is shipped with database creation and upgrade SQL scripts to make it easy for database administrators to manually create or upgrade AdminStudio databases.

- [Using Scripts to Create the AdminStudio Database](#)
- [Using Scripts to Upgrade Existing AdminStudio Tables](#)

Using Scripts to Create the AdminStudio Database

You can choose to create the AdminStudio Enterprise Server Application Catalog database as part of the main installation, or you can choose to create an SQL Server database manually using scripts.

Scripts to Run

When creating an AdminStudio database using scripts, you need to execute both standard scripts and scripts for plug-ins:

- [Standard Scripts](#)
- [Plug-In Scripts](#)

Standard Scripts

AdminStudio is shipped with the following database creation SQL scripts:

Table 3-3 • Scripts to Create AdminStudio Databases on SQL Server

```
AMS_System_Schema.SQL
WFM_System_Data.SQL
AMSCreateIndex.SQL
WFM_SampleTemplates.SQL
AS_System_Schema.SQL
AS_ApplicationModel.SQL
OsSecurityPatch.SQL
MergeModule.SQL
PredeploymentTest.SQL
SystemManagementServer.sql
WFM_JobManager.SQL
AS_TestCenter_Schema.SQL
Seed_Data.SQL
AS_ApplicationModelSeedData.SQL
AS_TestCenter_SeedData.SQL
CustomReportWizard.SQL
AS_StoredProcedures.SQL
VirtualizationReadiness.SQL
AS_UI_Support.sql
GroupPackageTree.SQL
AS_TestCenter_StoredProcedures.SQL
Reporting.StoredProcedures.SQL
ApplicationExtendedAttributes.SQL
MobileTables.sql
MobileProgrammability.sql
MobileSeedData.sql
DAR_Schema.sql
AS_ShimDB_Schema.sql
AS_ShimDB_SeedData.sql
```

The scripts that you can use to create databases can be found in subdirectory called **SQL_Scripts** in the following locations:

Table 3-4 • Location of Database Creation Scripts

Installation	Default Location
AdminStudio Client Tools	[AdminStudioInstallDirectory]\Support\SQL_Scripts
AdminStudio Enterprise Server	C:\AdminStudioWebComponents_2016\Support\SQL_Scripts



Note • You can also find the list of the standard scripts that you are required to run to create a new database in the following nodes of the **upgrade.xml** file (in the AdminStudio **Support** folder):

```
//AdminStudioUpgrade/WorkflowManager/Create/SQLServer
//AdminStudioUpgrade/AdminStudio/Create/SQLServer
```

Plug-In Scripts

In addition to the standard scripts, you also need to run all of the SQL script files for plug-ins, which are found in the following directories:

Table 3-5 • Location of Plug-in Scripts

Installation	Default Location
AdminStudio Client Tools	[AdminStudioInstallDirectory]\Common\Plugins
AdminStudio Enterprise Server	C:\WorkflowManager\Support\SQL_Scripts

Because AdminStudio provides extensible plug-in functionality, the list of SQL scripts in this directory is not fixed. However, the following table lists the plug-in scripts that are shipped with the product:

Table 3-6 • Plug-In Scripts

```
AirWatch.sql
Altiris.sql
ApkDeepLink.sql
AppV.sql
AppV5Conversion.sql
AppvServer.sql
AutomatedApplicationConv
enter.sql
Casper.sql
IpaDeepLink.sql
Msi.sql
WebDeploy.sql
XenApp.sql
Xpf.sql
```



Important • The order in which these scripts are run is not important; however, they must be run after the set of scripts listed in *Standard Scripts*.

Creating an Application Catalog Using Scripts

To create an AdminStudio Application Catalog database on SQL Server, perform the following steps:



Task

To use scripts to create an AdminStudio Application Catalog database:

1. Log on to your SQL Server.
2. Launch the Enterprise Manager and Query Analyzer.
3. In Query Analyzer, execute a CREATE DATABASE command to create and identify the new Application Catalog database.
4. Select the newly created database in Query Analyzer.
5. Execute the following scripts **in this order**:

```
AMS_System_Schema.SQL  
WFM_System_Data.SQL  
AMSCreateIndex.SQL  
WFM_SampleTemplates.SQL  
AS_System_Schema.SQL  
AS_ApplicationModel.SQL  
OsSecurityPatch.SQL  
MergeModule.SQL  
PredeploymentTest.SQL  
SystemManagementServer.sql  
WFM_JobManager.SQL  
AS_TestCenter_Schema.SQL  
Seed_Data.SQL  
AS_ApplicationModelSeedData.SQL  
AS_TestCenter_SeedData.SQL  
CustomReportWizard.SQL  
AS_StoredProcedures.SQL  
VirtualizationReadiness.SQL  
AS_UI_Support.sql  
GroupPackageTree.SQL  
AS_TestCenter_StoredProcedures.SQL  
Reporting.StoredProcedures.SQL  
ApplicationExtendedAttributes.SQL  
MobileTables.sql  
MobileProgrammability.sql  
MobileSeedData.sql  
DAR_Schema.sql  
AS_ShimDB_Schema.sql  
AS_ShimDB_SeedData.sql
```

6. Execute all of the SQL [Plug-In Scripts](#). By default, the following plug-in scripts are shipped with the product:

```
AirWatch.sql  
Altiris.sql  
ApkDeepLink.sql  
AppV.sql  
AppV5Conversion.sql  
AppvServer.sql  
AutomatedApplicationConverter.sql  
Casper.sql  
IpaDeepLink.sql  
Msi.sql  
WebDeploy.sql  
XenApp.sql  
Xpf.sql
```



Note • Running these scripts will create an Application Catalog that is compatible with AdminStudio 2016.

Using Scripts to Upgrade Existing AdminStudio Tables

Before running the setup, if you created the database manually in a previous release, perform these steps to upgrade the database to the existing AdminStudio tables.



Note • It is recommended that you use the AdminStudio Configuration Wizard to upgrade your database. However, if you created it manually in a previous release, and want to continue to do so, perform these steps.



Important • This is an advanced method of upgrading a database which requires running scripts manually on a database server.



Task **To upgrade an existing Application Catalog database:**

1. Open the CSSYSSCHEMAINFO table of your existing Application Catalog database, and locate the record with the highest **SchemaVersion** value. This is the **SchemaVersion** that you are upgrading from.
2. Locate the same **SchemaVersion** number in the table below, and note the corresponding **Product Version** number.
3. Run all of the scripts listed in the **Scripts to Run** column for that **Product Version**, in order.

- Next, run all of the scripts listed in the **Scripts to Run** column for subsequent product versions. If a script listed in a subsequent product version has already been run, it does not need to be run again.

For example, if you are upgrading from **SchemaVersion** 13286609, first run all of the scripts in the **14.0** row of the table, and then run all of the scripts in the **14.01** row of the table that have not already been run.

Product Version (SchemaVersion) Upgrading From	Product Version Upgrading To	Scripts to Run
12.00 (13286602)	12.01	1201Upgrade.sql
12.01 (13286603)	12.02	DarwinFixes.sql 1202Upgrade.sql 1202UpgradewFM.sql 1202UpgradewFMEmailTemplate1.sql 1202UpgradewFMEmailTemplate2.sql
12.02 (13286605)	13.00	AS_System_Schema.sql AS_ApplicationModel.sql OsSecurityPatch.sql MergeModule.sql PredeploymentTest.sql SystemManagementServer.sql WFM_JobManager.sql AS_TestCenter_Schema.sql CustomReportWizard.sql AS_StoredProcedures.sql VirtualizationReadiness.sql GroupPackageTree.sql AS_TestCenter_StoredProcedures.sql Reporting.StoredProcedures.sql ApplicationExtendedAttributes.sql MobileTables.sql MobileProgrammability.sql 1300Upgrade.sql MobileSeedDataEUCLID.sql 1301UpgradewFM.sql 1302UpgradewFM.SQL You also need to run any SQL scripts that are found in the Common\Plugins directory. The following plug-in scripts are shipped with the product: AirWatch.sql Altiris.sql AppV.sql AppvServer.sql Msi.sql XenApp.sql Xpf.sql

Product Version (SchemaVersion) Upgrading From	Product Version Upgrading To	Scripts to Run
13.00 (13286607)	14.00	<p>AS_System_Schema.sql AS_ApplicationModel.sql OsSecurityPatch.sql MergeModule.sql PredeploymentTest.sql SystemManagementServer.sql WFM_JobManager.sql AS_TestCenter_Schema.sql CustomReportWizard.sql AS_StoredProcedures.sql VirtualizationReadiness.sql AS_UI_Support.sql GroupPackageTree.sql AS_TestCenter_StoredProcedures.sql Reporting.StoredProcedures.sql ApplicationExtendedAttributes.sql MobileTables.sql MobileProgrammability.sql 1400Upgrade.sql DARSchemaUpdate.sql</p> <p>You also need to run any SQL scripts that are found in the Common\Plugins directory. The following plug-in scripts are shipped with the product:</p> <p>AirWatch.sql Altiris.sql AppV.sql AppvServer.sql Msi.sql XenApp.sql Xpf.sql</p>

Product Version (SchemaVersion) Upgrading From	Product Version Upgrading To	Scripts to Run
14.0 (13286609)	14.01	AS_System_Schema.sql AS_ApplicationModel.sql OsSecurityPatch.sql MergeModule.sql PredeploymentTest.sql SystemManagementServer.sql WFM_JobManager.sql AS_TestCenter_Schema.sql CustomReportWizard.sql AS_StoredProcedures.sql VirtualizationReadiness.sql AS_UI_Support.sql GroupPackageTree.sql AS_TestCenter_StoredProcedures.sql Reporting.StoredProcedures.sql ApplicationExtendedAttributes.sql MobileTables.sql MobileProgrammability.sql AS_ShimDB_Schema.sql AS_ShimDB_SeedData.sql 1401Upgrade.sql 1401UpgradewFM.sql 1401UpgradeAIR.sql 1401UpgradeAIRProjectData.sql You also need to run any SQL scripts that are found in the Common\Plugins directory. The following plug-in scripts are shipped with the product: AirWatch.sql Altiris.sql AppV.sql AppvServer.sql Msi.sql WebDeploy.sql XenApp.sql Xpf.sql

Product Version (SchemaVersion) Upgrading From	Product Version Upgrading To	Scripts to Run
14.01 (13286611)	15.00	AS_System_Schema.sql AS_ApplicationModel.sql OsSecurityPatch.sql MergeModule.sql PredeploymentTest.sql SystemManagementServer.sql WFM_JobManager.sql AS_TestCenter_Schema.sql CustomReportWizard.sql AS_StoredProcedures.sql VirtualizationReadiness.sql AS_UI_Support.sql GroupPackageTree.sql AS_TestCenter_StoredProcedures.sql Reporting.StoredProcedures.sql ApplicationExtendedAttributes.sql MobileTables.sql MobileProgrammability.sql 1500Upgrade.sql 1500UpgradeWFM.sql 1500UpgradeAIR.sql You also need to run any SQL scripts that are found in the Common\Plugins directory. The following plug-in scripts are shipped with the product: AirWatch.sql Altiris.sql ApkDeepLink.sql AppV.sql AppV5Conversion.sql AppvServer.sql AutomatedApplicationConverter.sql Casper.sql IpaDeepLink.sql Msi.sql WebDeploy.sql XenApp.sql Xpf.sql



Note • All of the information in this table can be found in the **Upgrade.xml** file, which is installed in the **Support** subdirectory of the AdminStudio installation directory. This file also includes information on upgrading from versions prior to version 12.0 (AdminStudio 2013).

Chapter 3 Installing AdminStudio Enterprise Server

Using Scripts to Create or Update an AdminStudio Database

4

Configuring AdminStudio Enterprise Server

This chapter explains how to perform post-installation AdminStudio Enterprise Server configuration.

- [Configuring Using the AdminStudio Configuration Wizard](#)
- [Launching AdminStudio Enterprise Server](#)



Tip • For a complete list of known issues that pertain to the AdminStudio Enterprise Server, see the [AdminStudio Support Knowledge Base](#).

Configuring Using the AdminStudio Configuration Wizard

The AdminStudio Configuration Wizard automatically opens after you close the installer and prompts you to set AdminStudio Enterprise Server's mandatory configuration settings: SQL Server database information, default connection, and location of your license file.

You can also open the AdminStudio Configuration Wizard at any time to update mandatory configuration settings, connect to the Flexera Service Gateway or set optional advanced configuration settings.

- [Specifying Mandatory Configuration Settings](#)
- [Setting Advanced Configuration Settings](#)

Specifying Mandatory Configuration Settings

After running the installer, as described in [Running the AdminStudio Enterprise Server Installer](#), the AdminStudio Configuration Wizard automatically opens. You will be prompted to enter the information described in [Gathering Required Information](#), and you will be prompted to upload the license file that was attached to your email from Flexera Software Orders.



Note • You are required to specify these mandatory settings immediately after installation. You can also update these settings at any time by launching the AdminStudio Configuration Wizard manually and selecting **Create/update AdminStudio database** and/or **Activate AdminStudio license** on the **Welcome** panel of the wizard. To manually launch the AdminStudio Configuration Wizard, open the following file:

C:\AdminStudioWebComponents_2015\Support\Config\Config.exe



Task **To specify settings in the AdminStudio Configuration Wizard:**

1. When installation is complete, the AdminStudio Configuration Utility will automatically launch. The **Create or Update an AdminStudio** database panel opens.

AdminStudio Configuration Wizard

Create or Update an AdminStudio database

Create a new database
 Update/connect to an existing Workflow Manager or AdminStudio database

Server: []

Authentication: Windows Authentication []

User ID: ISAS\Phowe []

Password: []

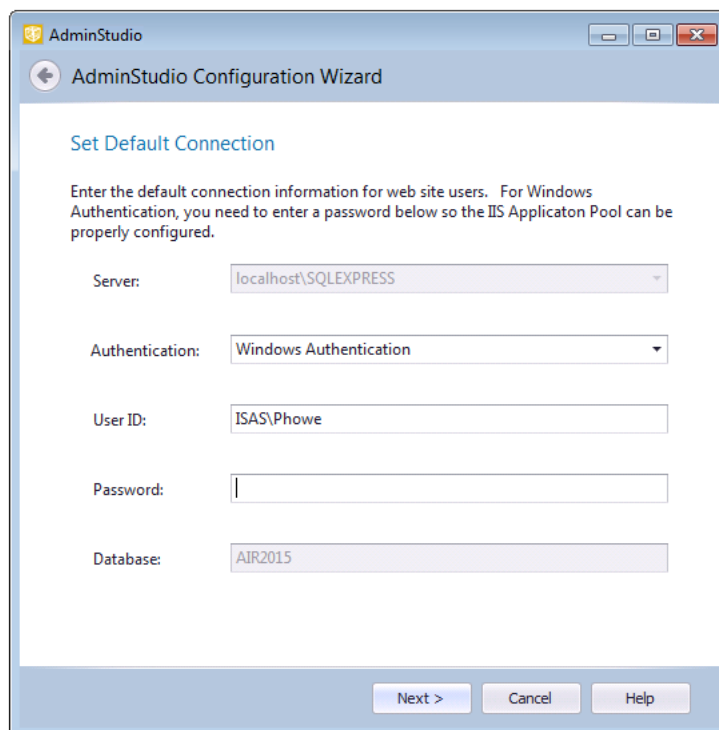
Database: []

Next > Cancel Help

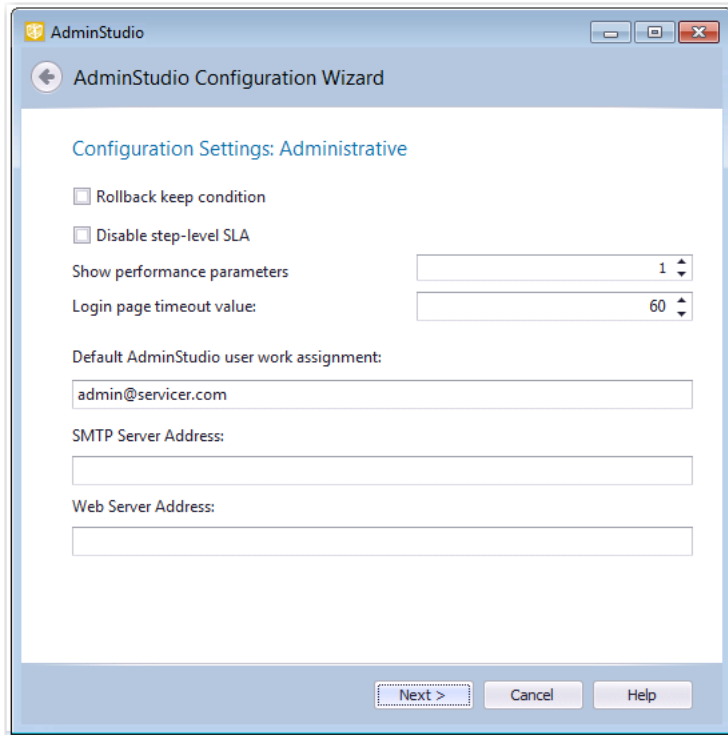
- On the **Create or Update an AdminStudio Database** panel, you are prompted to enter the database server and database name of the database where you will be storing your AdminStudio Enterprise Server data, and login the credentials to that database. Enter the following information:

Property	Description
Option	Select one of the following options: <ul style="list-style-type: none"> Create a new database Update/connect to an existing or AdminStudio database
Server	Either select a server from the list of available SQL Servers on the network, or manually enter the name of the SQL Server to which you want to connect.
Authentication	Select one of the following options: <ul style="list-style-type: none"> Windows Authentication—Choose to use Windows network authentication (your network login ID) to log into this database. Server Authentication—Choose to use SQL Server login identification for authentication. If you choose this option, you need to also enter the appropriate User ID and Password.
Database	If creating a new database, enter its name. If connecting to an existing database, enter its name or select the database name from the list.




- Click **Next**. The **Set Default Connection** panel opens, prompting you to enter the default connection information for web site users.





4. Do one of the following based upon the Authentication selection you made on the previous panel:
 - **Windows Authentication**—Enter the **User ID** and **Password** that the Web Sites Application Pool will run as in order to access the database.
 - **SQL Server Authentication**—Confirm that the **User ID** and **Password** that you entered in the previous panel are displayed here.
5. Click **Next**. The **Configuration Settings: Administrative** panel opens.

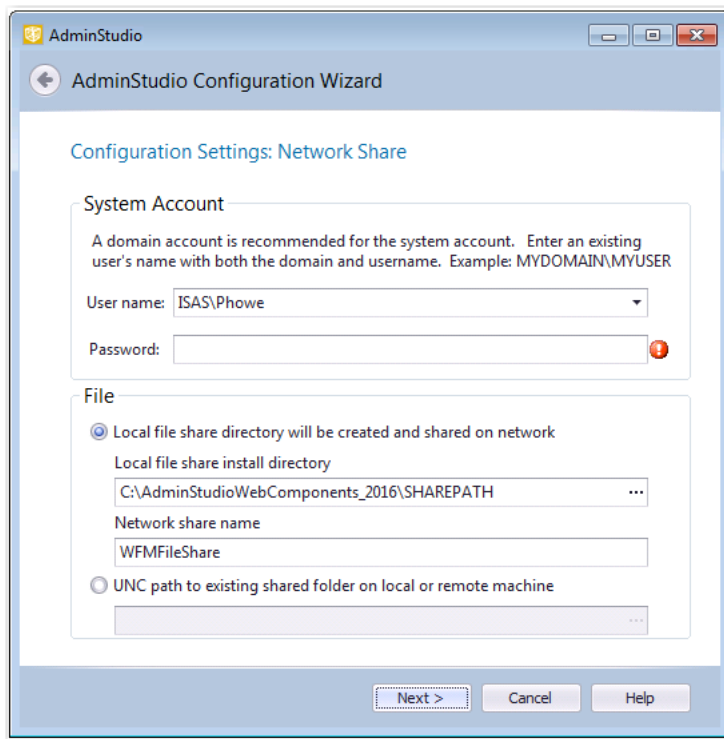


6. Specify the following settings:


Property	Description
Rollback keep condition	 Note • N/A for AdminStudio Enterprise Server
Disable step-level SLA	 Note • N/A for AdminStudio Enterprise Server
Show performance parameters	 Note • N/A for AdminStudio Enterprise Server
Login page timeout value	Identifies the length of time that you can leave the login page open before it times out.




Property	Description
Default AdminStudio user work assignment	 Note • N/A for AdminStudio Enterprise Server
SMTP Server Address	 Note • N/A for AdminStudio Enterprise Server
Web Server Address	Edit to modify the AdminStudio Enterprise Server website IP address. By default, it is http://localhost/.

- Click **Next**. The **Configuration Settings: Network Share** panel opens.

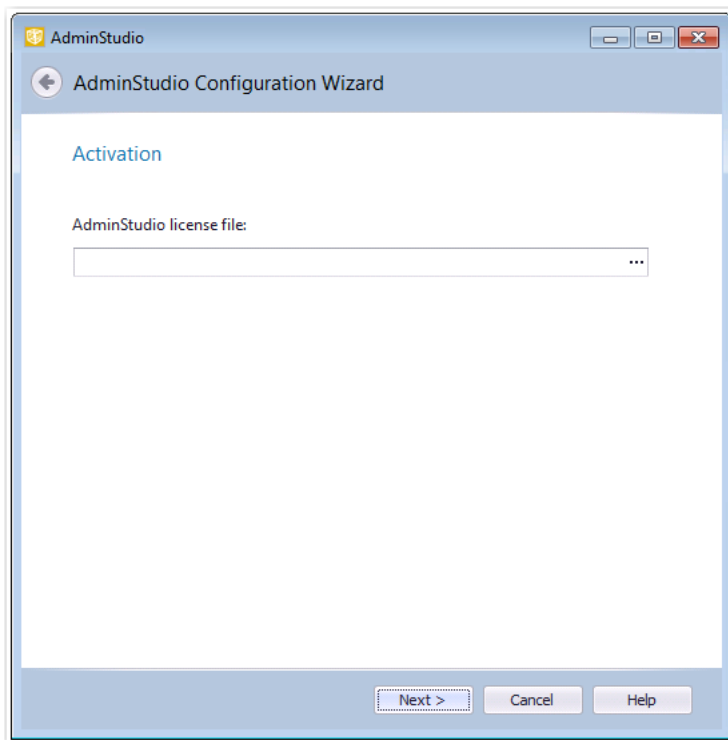


- Enter the following information:

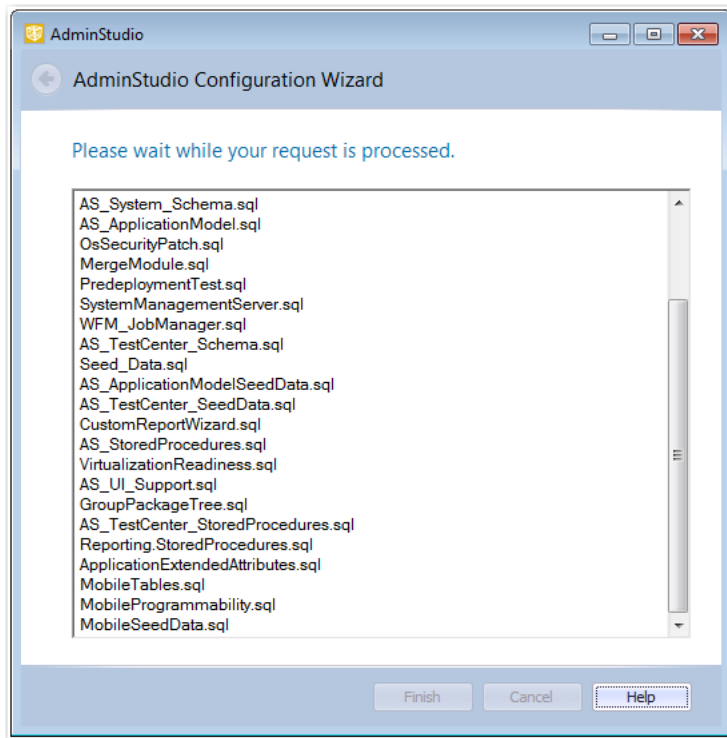
Property	Description
User name Password	Enter a user name and password for the system account. Enter the user name in DOMAIN_NAME\USER_NAME format.
Local file share directory will be created and shared on network	 Note • N/A for AdminStudio Enterprise Server

Property	Description
Local file share install directory	 Note • N/A for AdminStudio Enterprise Server
Network share name	 Note • N/A for AdminStudio Enterprise Server
UNC path to existing shared folder on local or remote machine	 Note • N/A for AdminStudio Enterprise Server

9. Click **Next**. The **Activation** panel opens.



10. Click the browse button and upload the license file that was attached to your email from Flexera Software Orders, and then click **Next**. The configuration begins and messages are displayed.



11. When the configuration steps are complete, click **Finish** to close the wizard.

Setting Advanced Configuration Settings

To set advanced AdminStudio Enterprise Server settings, perform the following steps:

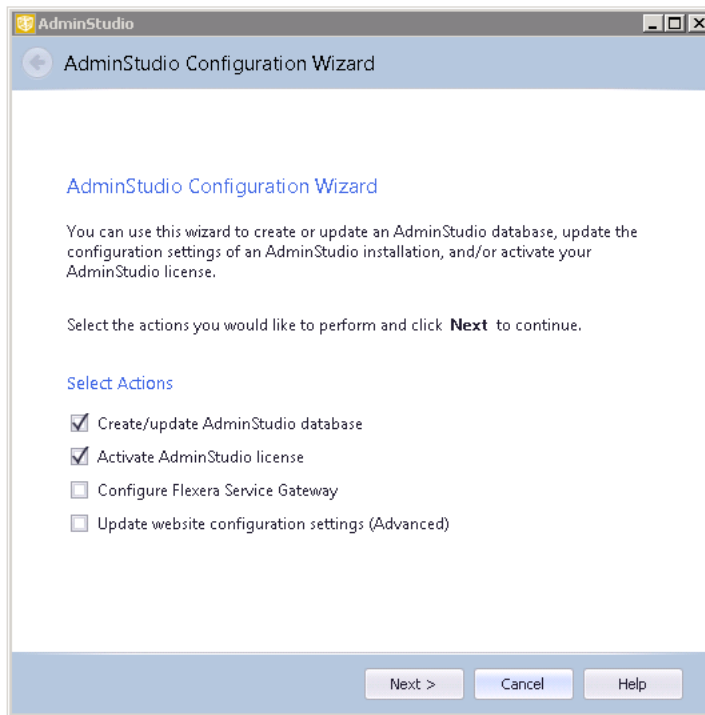


Task **To set advanced configuration settings:**

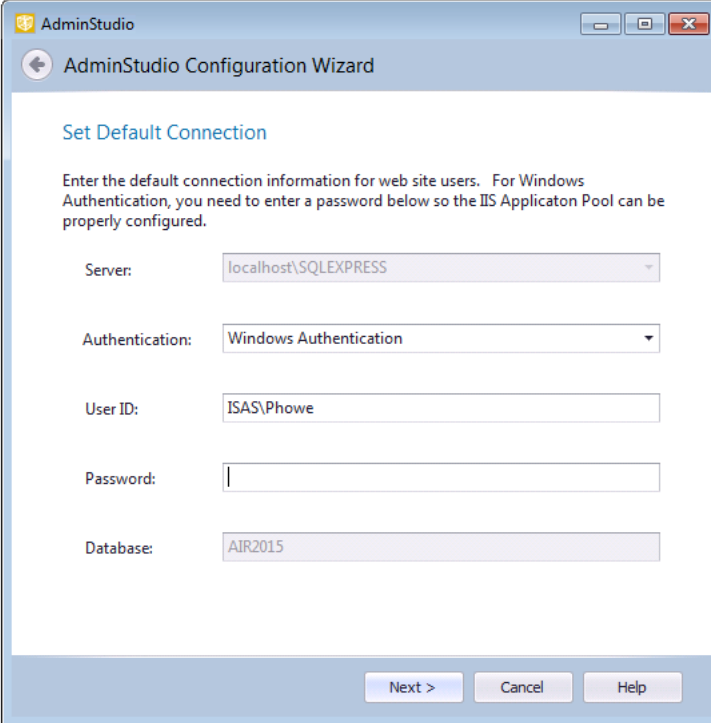
1. Launch the following file on the machine where you installed :

C:\AdminStudioWebComponents_2016\Support\Config\Config.exe

The AdminStudio Configuration Wizard Welcome panel opens.



2. Select **Update website configuration settings (Advanced)** and click **Next**. The **Set Default Connection** panel opens, prompting you to enter the default connection information for web site users.



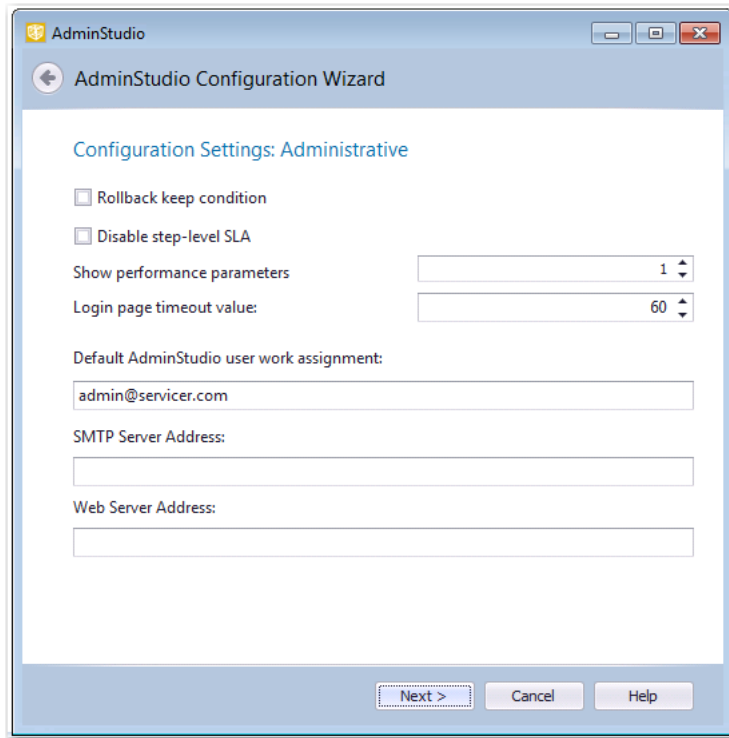
The screenshot shows the 'Set Default Connection' panel in the AdminStudio Configuration Wizard. The window title is 'AdminStudio' and the wizard title is 'AdminStudio Configuration Wizard'. The panel contains the following fields and instructions:

- Server:** localhost\SQLEXPRESS
- Authentication:** Windows Authentication
- User ID:** ISAS\Phowe
- Password:** (empty field)
- Database:** AIR2015





At the bottom of the panel are three buttons: 'Next >', 'Cancel', and 'Help'.


3. Do one of the following based upon whether you are using Windows authentication or server authentication when connecting to the AdminStudio database:
 - **Windows Authentication**—Enter or edit the **User ID** and **Password** that the Web Sites Application Pool will run as in order to access the database.
 - **SQL Server Authentication**—Confirm that the **User ID** and **Password** that you entered when you configured the database connection are displayed here.

- Click **Next**. The **Configuration Settings: Administrative** panel opens.

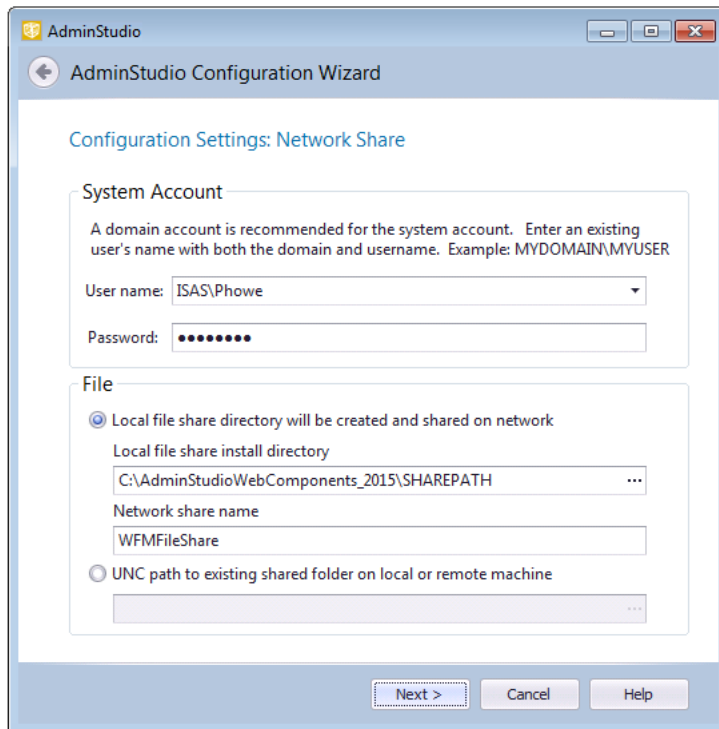


- Specify the following options:



Property	Description
Rollback keep condition	 Note • N/A for AdminStudio Enterprise Server
Disable step-level SLA	 Note • N/A for AdminStudio Enterprise Server
Show performance parameters	 Note • N/A for AdminStudio Enterprise Server
Login page timeout value	Identifies the length of time that you can leave the login page open before it times out.
Default AdminStudio user work assignment	 Note • N/A for AdminStudio Enterprise Server



Property	Description
SMTP Server Address	 Note • N/A for AdminStudio Enterprise Server
Web Server Address	Edit to modify the AdminStudio Enterprise Server website IP address. By default, it is http://localhost/.

- Click **Next**. The **Configuration Settings: Network Share** panel opens.



- Enter the following information:

Property	Description
User name	Enter a user name and password for the system account. Enter the user name in DOMAIN_NAME\USER_NAME format.
Password	
Local file share directory will be created and shared on network	 Note • N/A for AdminStudio Enterprise Server
Local file share install directory	 Note • N/A for AdminStudio Enterprise Server

Property	Description
Network share name	 Note • N/A for AdminStudio Enterprise Server
UNC path to existing shared folder on local or remote machine	 Note • N/A for AdminStudio Enterprise Server

8. Click **Next**. The configuration begins and messages are displayed.
9. When the configuration steps are complete, click **Finish** to close the wizard.

Launching AdminStudio Enterprise Server

After you perform the steps in [Specifying Mandatory Configuration Settings](#), you are now ready to launch AdminStudio Enterprise Server.



Task

To launch AdminStudio Enterprise Server:

1. Do one of the following:
 - a. If you are on the machine where you installed AdminStudio Enterprise Server, select **AdminStudio Web Components** from the Start menu.
 - b. If you are on another machine in the network, open a browser window and enter the **Web Site IP Address** you specified on the **IP Address** panel, such as:


```
http://111.22.333.44
```

 The **AdminStudio Enterprise Server Login** page opens:
2. You can log on using the default account of the default workflow administrator company.
 - **User Name:** admin@company.com
 - **Password:** admin

Performing Other Configuration Tasks

You may want to perform some of the following configuration tasks:

- [Additional Verification Steps After Installation](#)
- [Enabling Login to AdminStudio Enterprise Server Using Windows NT Authentication](#)

Additional Verification Steps After Installation

You may want to perform these additional verification steps after the installation is complete to ensure that AdminStudio Enterprise Server was installed properly.



Task

To verify that installation was successful:

1. Open **Internet Information Services (IIS) Manager**.
2. Select your server name in the tree. The **Home** view opens.
3. Under **IIS**, select **ISAPI and CGI Restrictions** and select **Open Feature** from the context menu.
4. Make sure that all ASP.NET features have **Allowed** listed in the **Restriction** column.
5. In the tree under **Sites**, make sure that there is a node named **AdminStudio Web Components 2016 Application**.
6. In the tree, select **Application Pools**. The **Application Pools** view opens.
7. Make sure that **AdminStudioWebComponents2016** is listed and that its **Status** is set to **Started**.
8. Open the Windows **Services** dialog box.
9. In the **Services (Local)** list, make sure that the **Status** of **ASP.NET State Service** is set to **Started**.

Enabling Login to AdminStudio Enterprise Server Using Windows NT Authentication

To enable login to the AdminStudio Enterprise Server website using Windows NT authentication, perform the following steps:



Task**To enable Windows NT Authentication without using a portal:**

1. On the AdminStudio Enterprise Server web server, open the **Control Panel**.
2. Click **Administrative Tools**. The **Administrative Tools** dialog box opens.
3. In the list, select **Internet Information Services (IIS) Manager** and select **Open** from the context menu. The **Internet Information Services (IIS) Manager** dialog box opens.
4. Expand the nodes in the tree, and under **Sites**, select **AdminStudio Web Components 2016 Application**. The **AdminStudio Web Components 2016 Application Home** view opens.
5. Under **IIS**, select **Authentication** and select **Open Feature** from the context menu. The **Authentication** view opens.
6. Set **Anonymous Authentication** to **Disabled**.
7. Set **Windows Authentication** to **Enabled**.

Index

Symbols

.NET 14

A

AdminStudio

- database server permissions 10
- installing IIS 12
- minimum permissions 10
- minimum privileges 10

AdminStudio Configuration Wizard 33

- launching 34, 35
- location of executable 34, 35

AdminStudio Enterprise Server

- .NET framework 14
- domain account 14
- installing 19
- launching 44
- system requirements 14
- using scripts to create databases 24

Application Catalog 24

- creation permissions 24
- using scripts to create for SQL Server 24

C

configuration 33

Configuration Wizard 33

- launching 34, 35

D

database

- creating 34
- database server
 - permissions 10
- databases
 - using scripts to create 24
- Default AdminStudio user work assignment 37, 42
- Disable step-level SLA 36, 42
- domain account 14

H

help

- using 6

I

IIS (Internet Information Services) 12, 14

installing 19

- AdminStudio Enterprise Server 19
- required information 16

L

Login page 44

Login page timeout value 36, 42

M

Microsoft SQL Server

- creating a database 34

P

permissions

- database server [10](#)
- minimum for AdminStudio [10](#)
- SQL Server for AdminStudio Application Catalog creation [24](#)

S

- scripts [24](#)
 - using to create Application Catalog for SQL Server [24](#)
- SQL Server [24](#)
 - permissions for Application Catalog creation [24](#)
- system requirements [14](#)
 - .NET framework [14](#)